

Ecography

ECOG-00780

Chardon, N. I., Cornwell, W. K., Flint, L. E. and Ackerly, D. D. 2014. Topographic, latitudinal and climatic distribution of *Pinus coulteri*: geographic range limits are not at the edge of the climate envelope. – Ecography doi: 10.1111/ecog.00780

Supplementary material

Figure 1 (cont.)

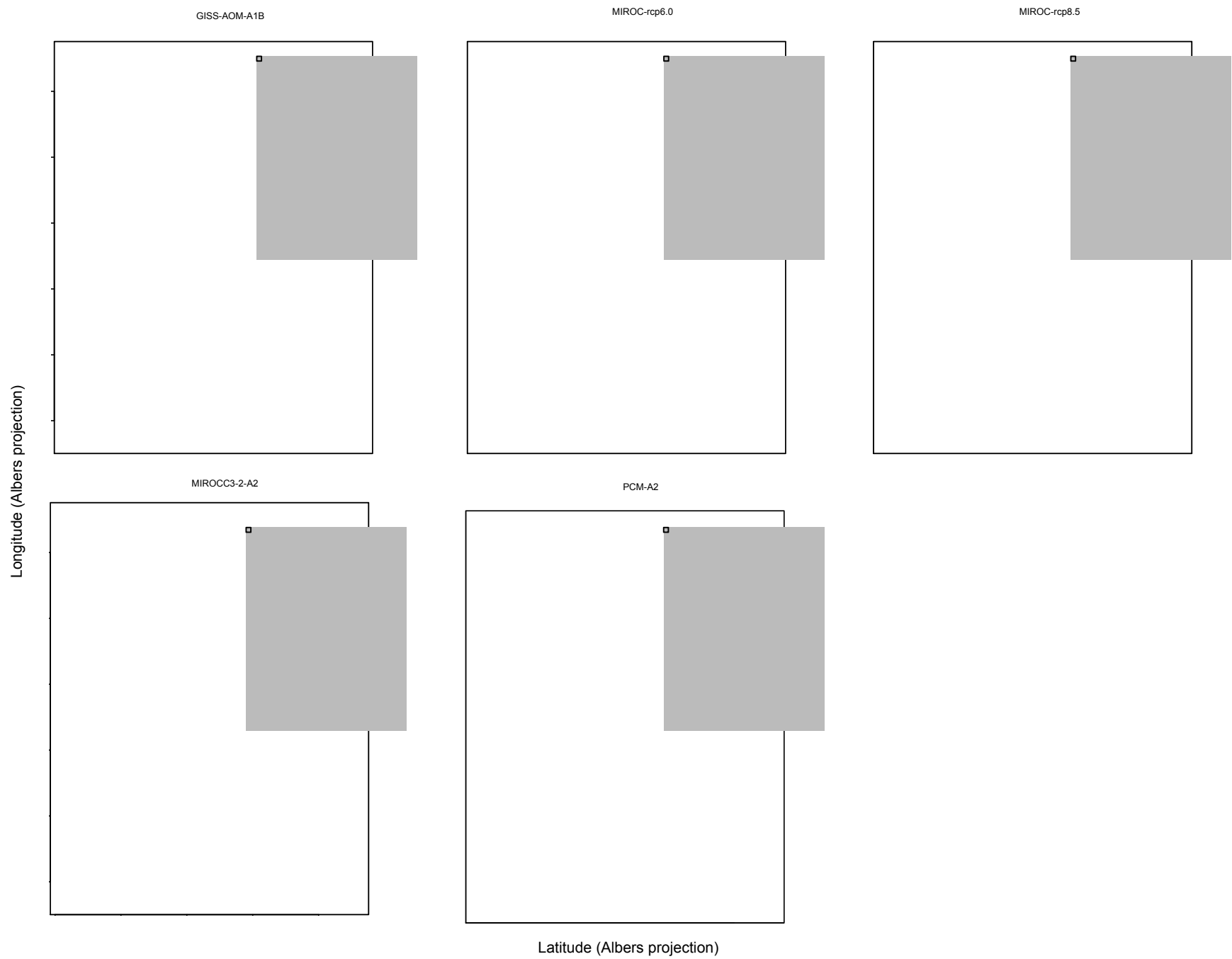


Figure A2

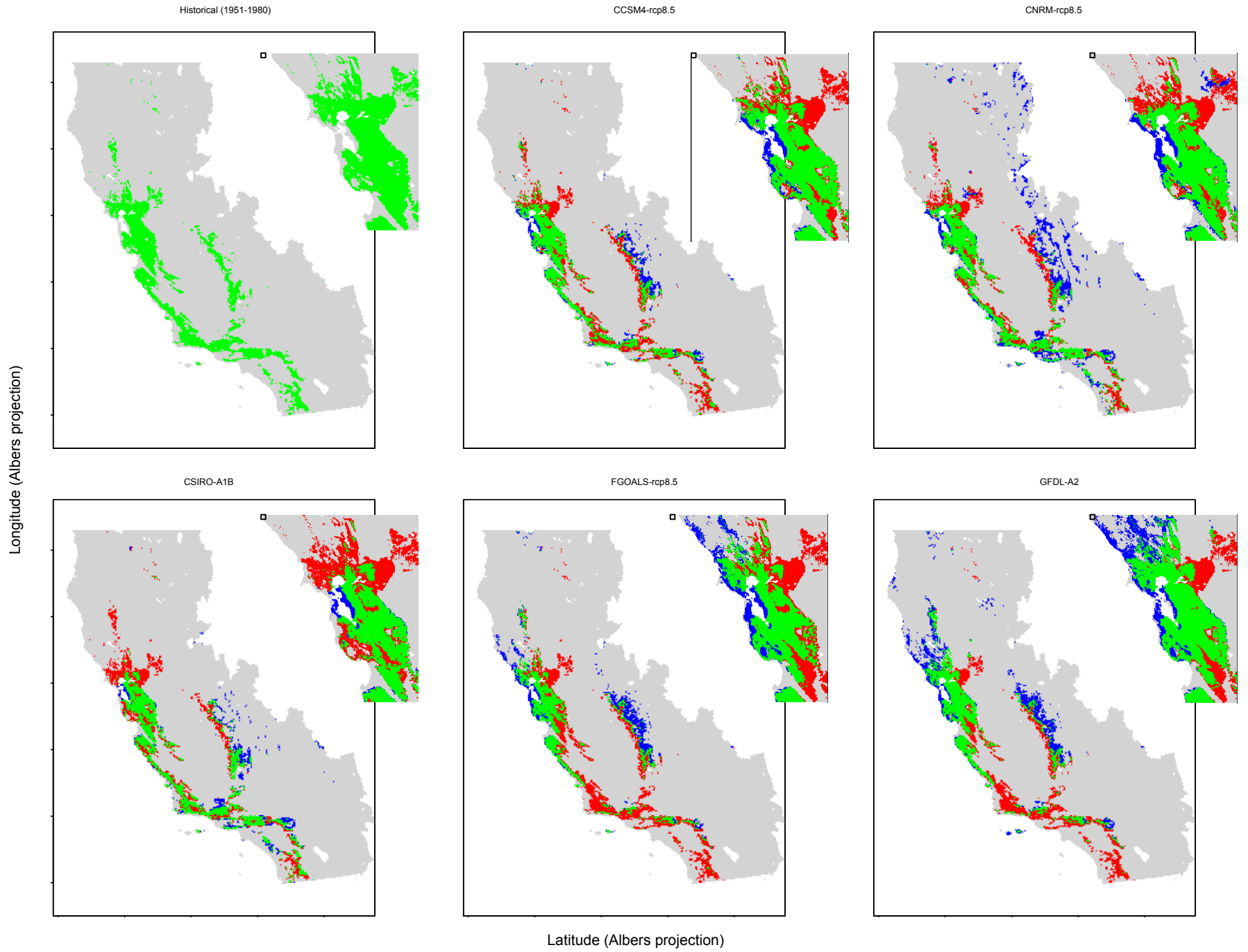


Figure A2 (cont.)

