

Ecography

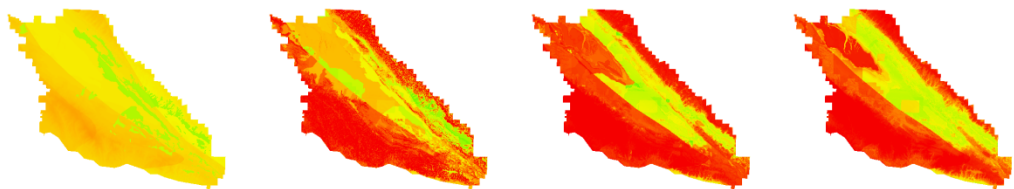
E6545

Bean, W. T., Stafford, R. and Brashares, J. S. 2011. The effects of small sample size and sample bias on threshold selection and accuracy assessment of species distribution models. – *Ecography* 34: xxx–xxx.

Supplementary material

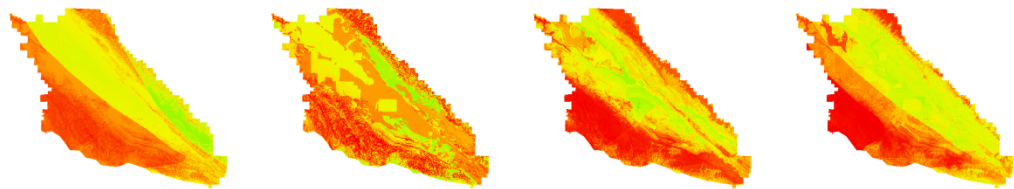
Appendix 1

2001



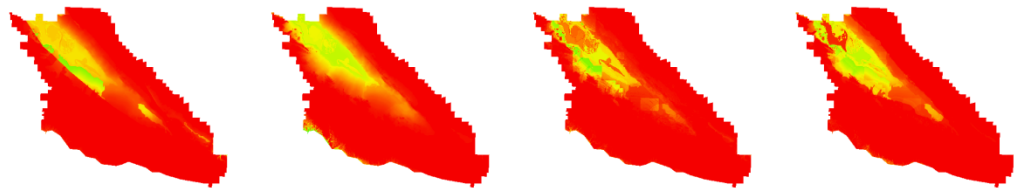
Samples: 5 10 100 1000

2006



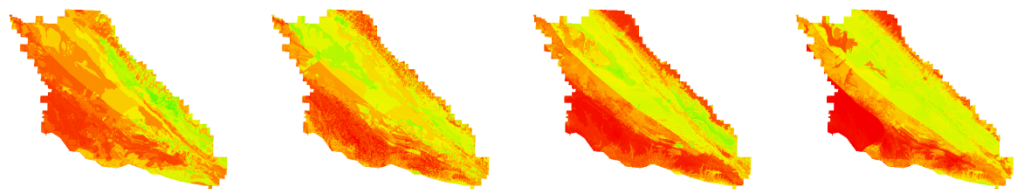
Samples: 5 10 100 1000

2008



Samples: 5 10 100 1000

Combined



Samples: 5 10 100 1000

Suitability: Low  High

Figure A1. Sample Maxent results for each sample size and year.

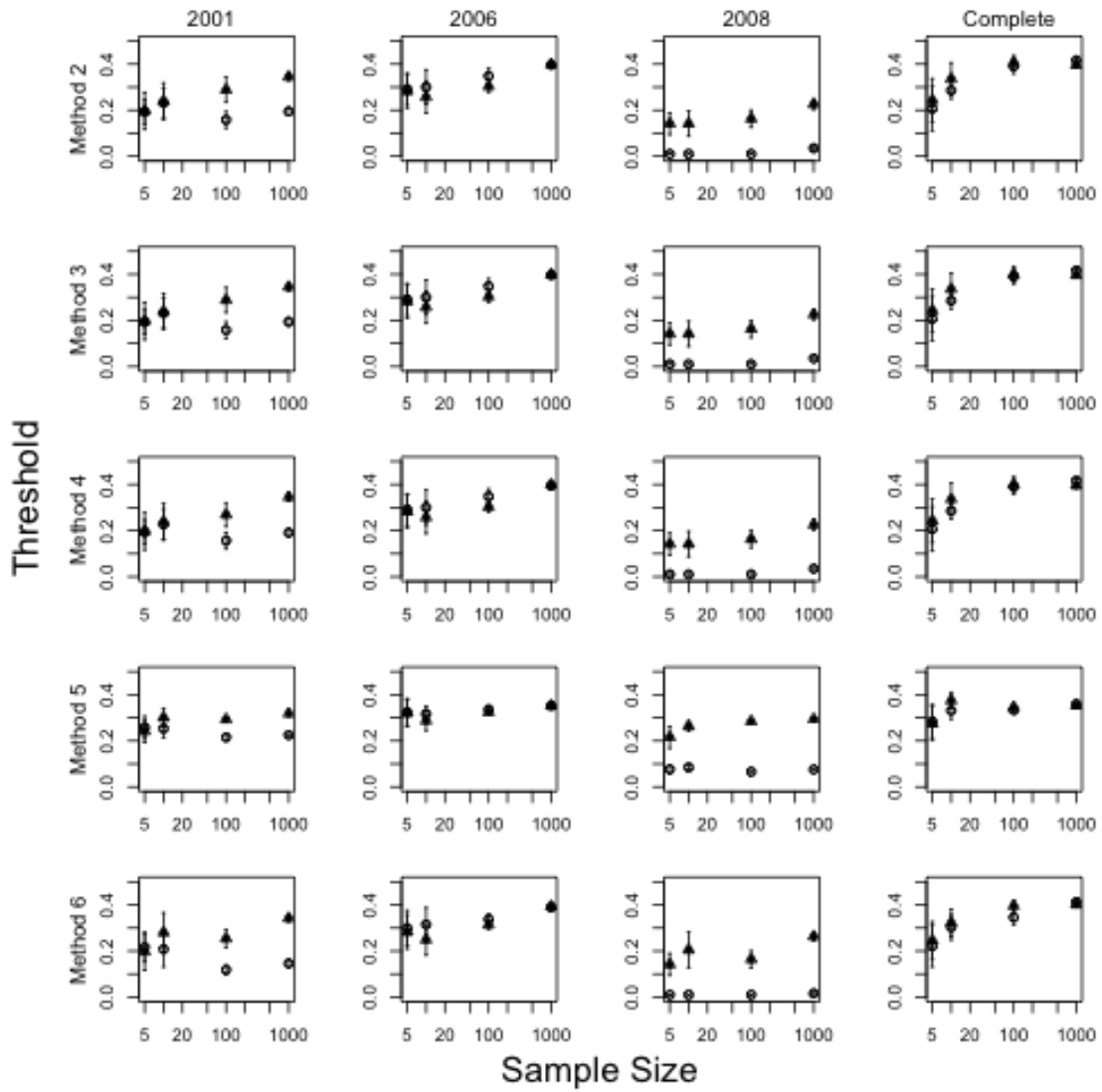


Figure A2. Additional thresholds, selected with methods 2 – 6.

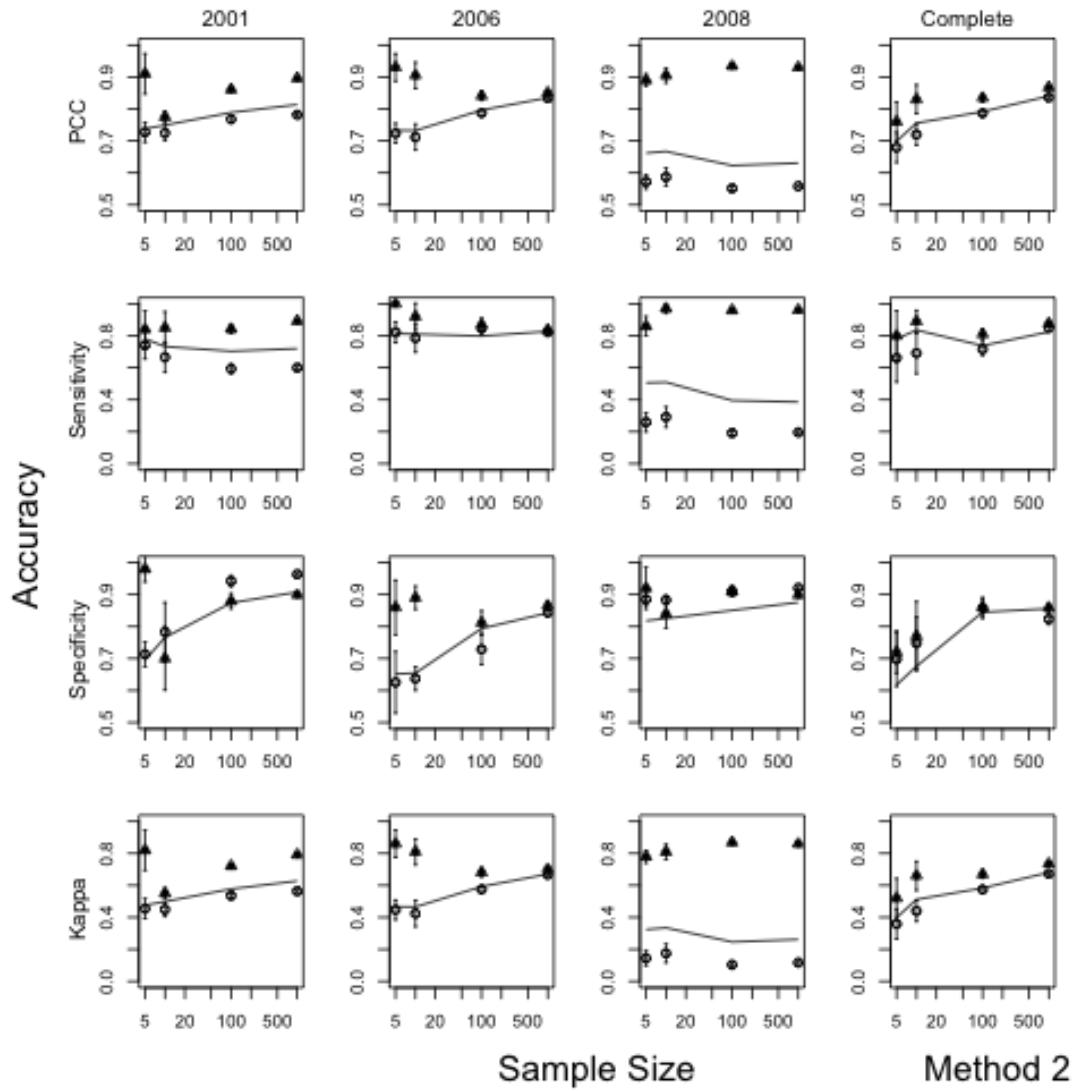


Figure A3. Additional accuracy statistics for threshold selection Method 2.

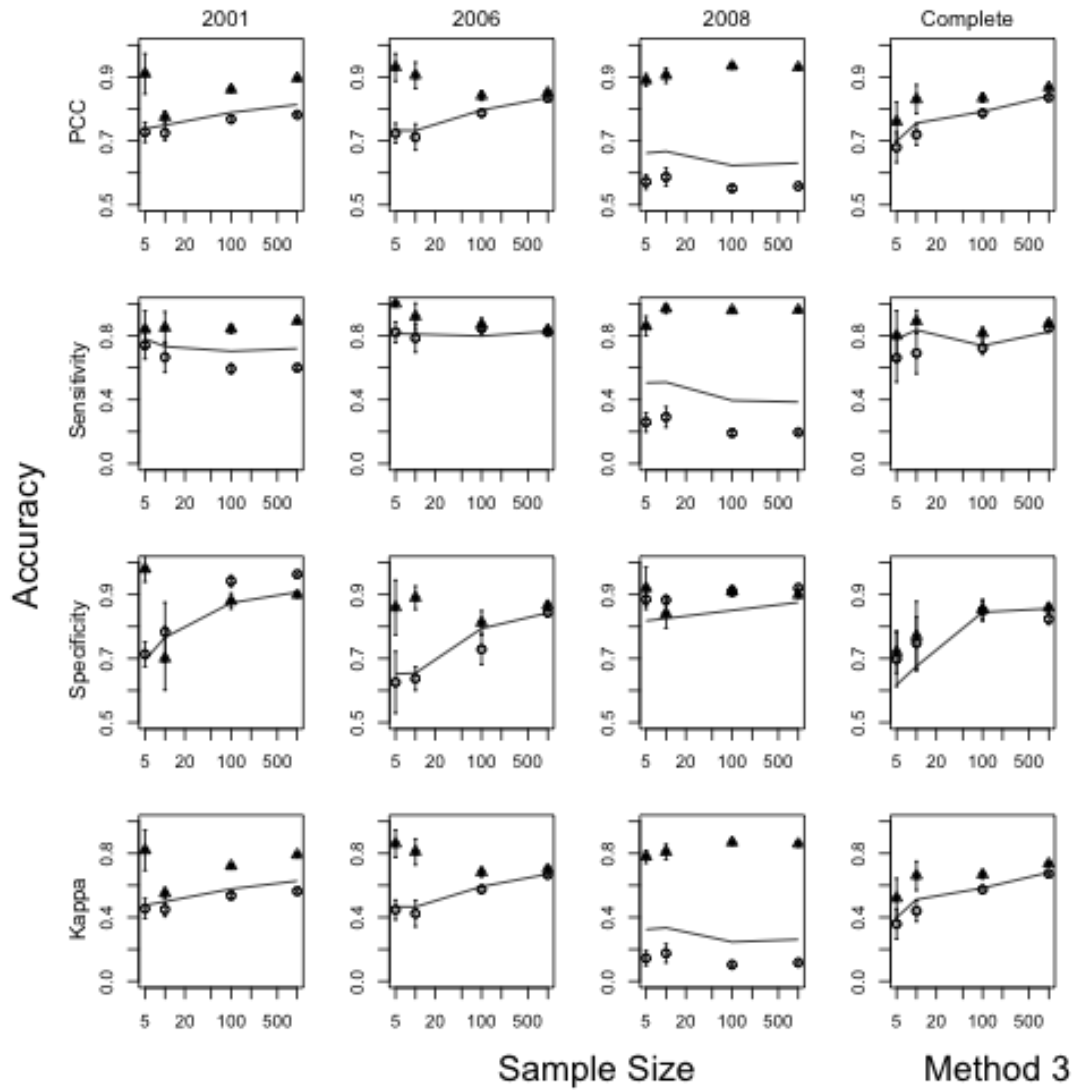


Figure A4. Additional accuracy statistics for threshold selection Method 3.

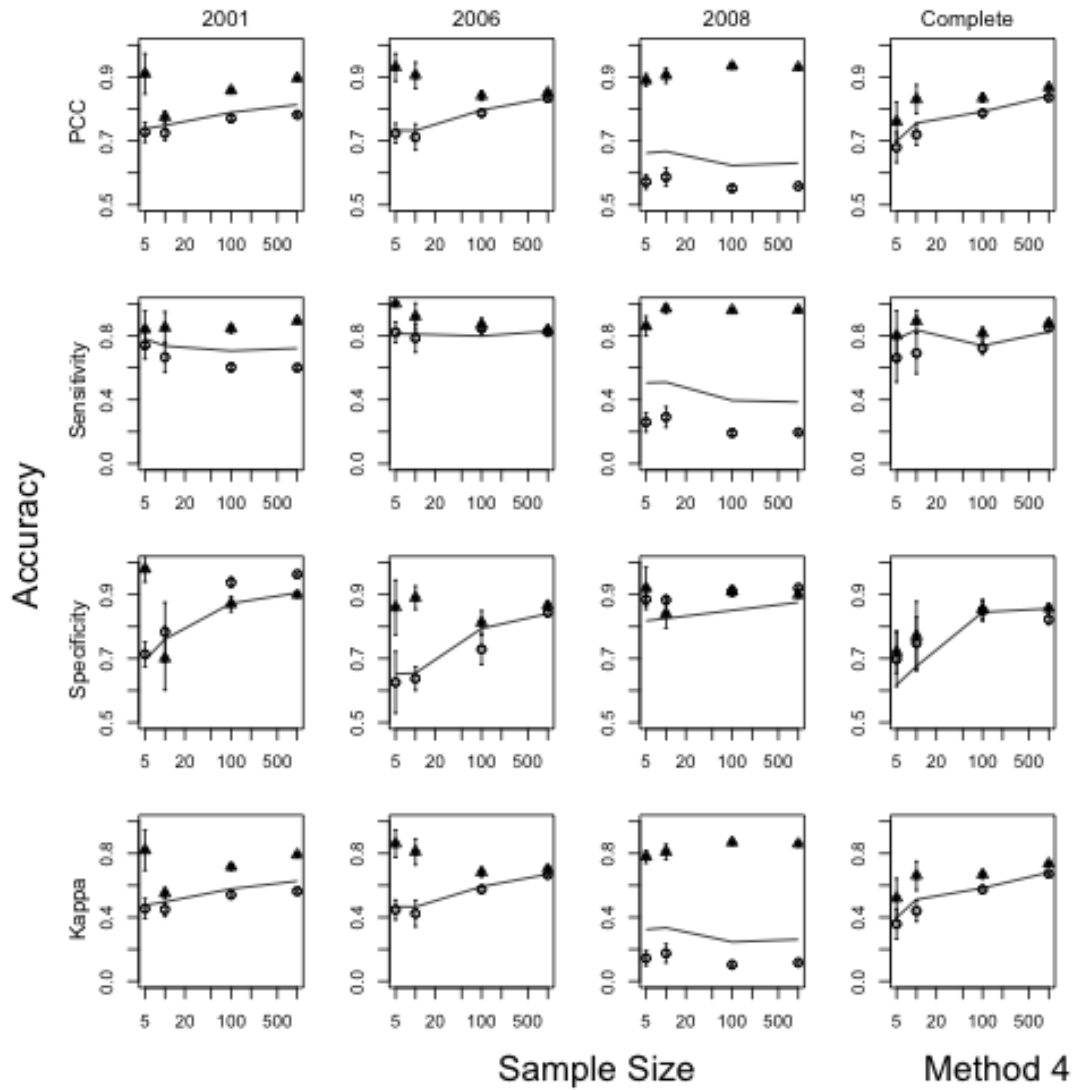


Figure A5. Additional accuracy statistics for threshold selection Method 4.

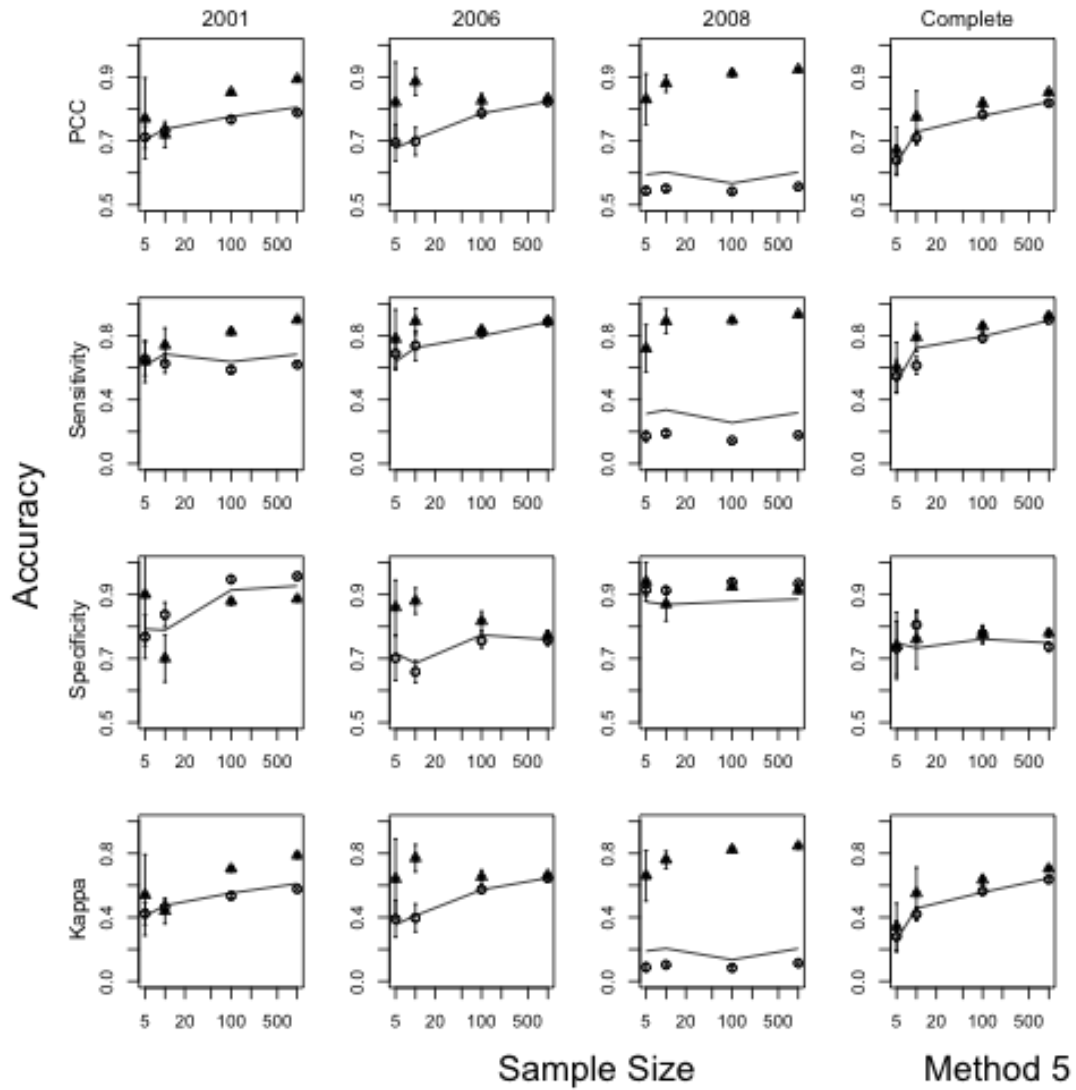


Figure A6. Additional accuracy statistics for threshold selection Method 5.

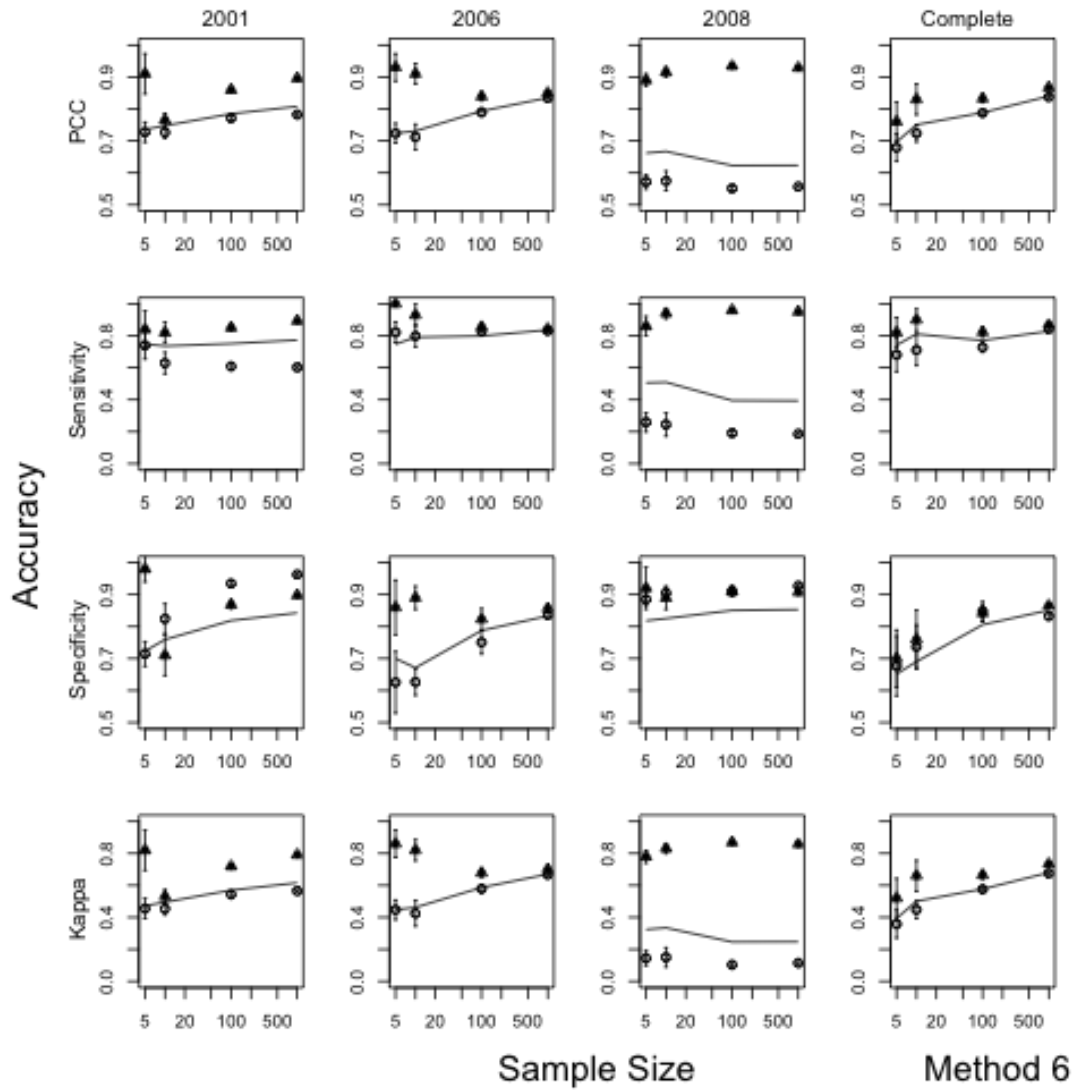


Figure A7. Additional accuracy statistics for threshold selection Method 6.