

ECOG-04498

Reverté, S., Bosch, J., Arnan, X., Roslin, T.,
Stefanescu, C., Calleja, J. A., Molowny-Horas, R.,
Hernández-Castellano, C. and Rodrigo, A. 2019.

Spatial variability in a plant–pollinator community
across a continuous habitat: high heterogeneity in
the face of apparent uniformity. – Ecography doi:
10.1111/ecog.04498

Appendix 1

Figure A1. Orthophoto map of the study area (Garraf Natural Park) indicating the 40 study plots (yellow dots).

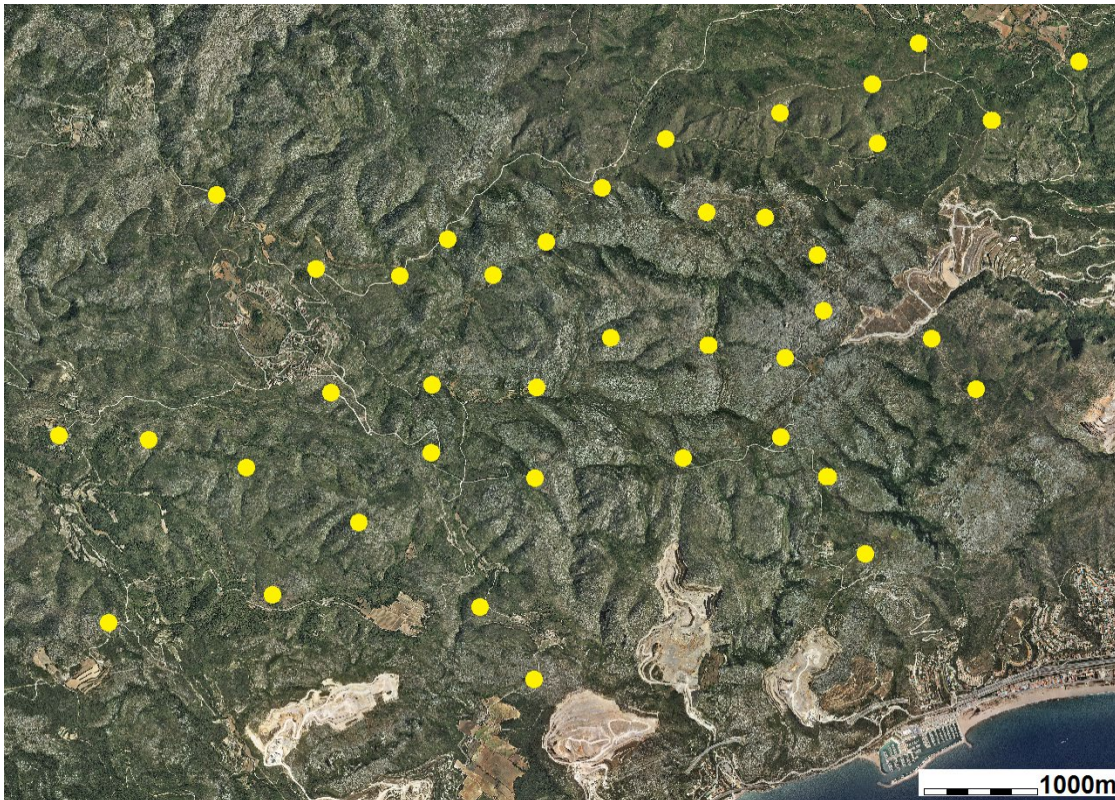


Figure A2. Mantel correlogram of species community composition. Filled squares represent distance classes with a significant level ($p < 0.05$) of spatial autocorrelation. a) Flower community composition. b) Pollinator community composition (including honey bees). c) Wild pollinator community composition.

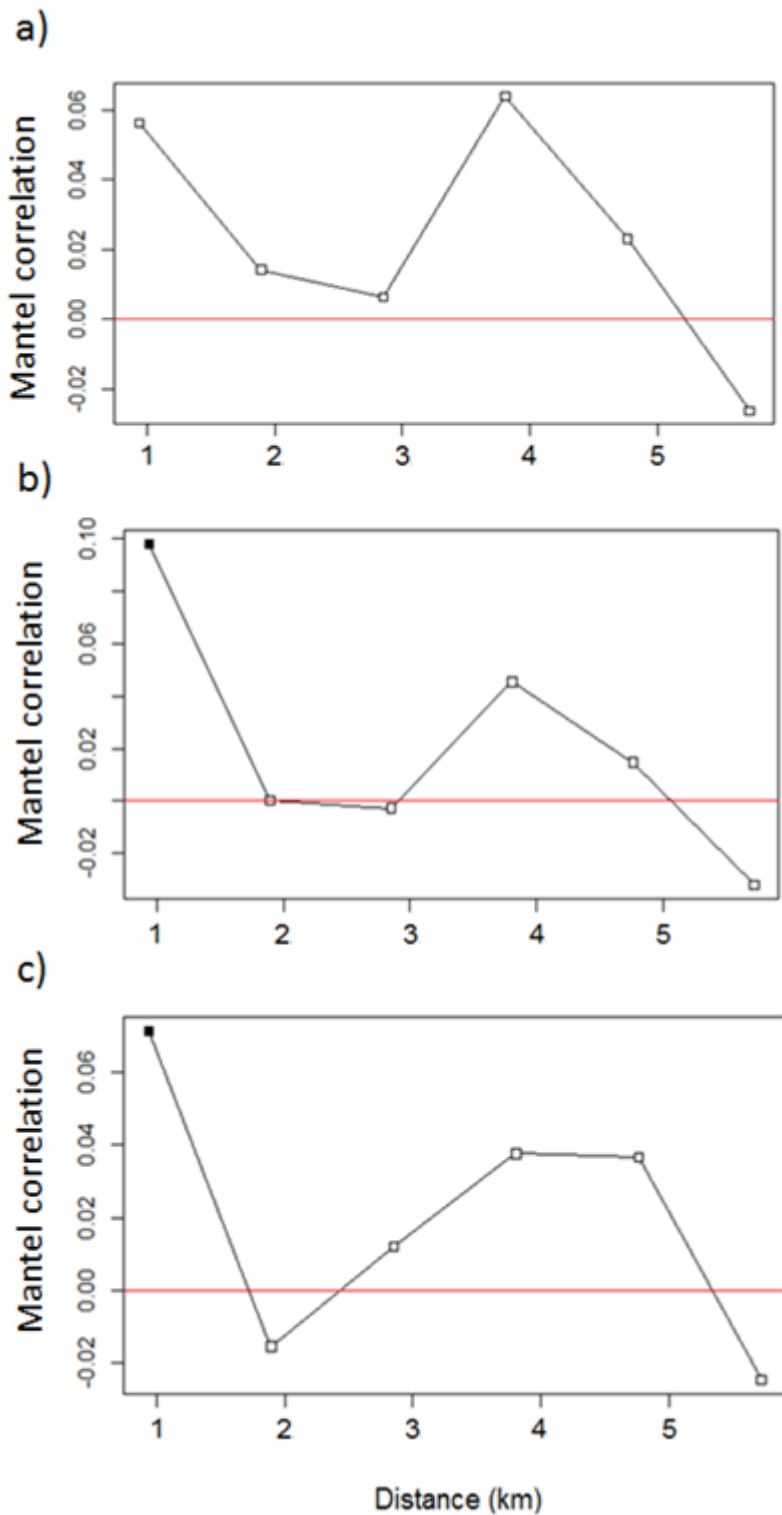


Table A1. Statistical outputs from path analyses measuring the effects of temperature, honey bee visitation rate and various flower community parameters on wild pollinator abundance, visitation rate, richness and composition. Coefficient estimates and p-values from the analysis of wild pollinator composition were extracted from partial Mantel tests (Leduc et al. 1992) and were subjected to a Bonferroni correction (alpha level of significance lowered from 0.05 to 0.01).

Model	Response	Predictor	Coefficient estimates	p-value
Wild pollinator abundance				
	honey bee visitation rate	temperature	2.805	0.000
	honey bee visitation rate	flower abundance	0.016	0.900
	wild pollinator abundance	flower abundance	0.436	0.001
	wild pollinator abundance	temperature	1.474	0.041
	wild pollinator abundance	honey bee visitation rate	0.104	0.506
Wild pollinators visitation rate				
	honey bee visitation rate	temperature	2.805	0.000
	honey bee visitation rate	flower abundance	0.016	0.900
	wild pollinator visitation rate	flower abundance	-0.564	0.000
	wild pollinator visitation rate	temperature	1.474	0.041
	wild pollinator visitation rate	honey bee visitation rate	0.104	0.506
Wild pollinator richness				
	honey bee visitation rate	temperature	2.852	0.000
	honey bee visitation rate	flower richness	-0.066	0.822
	honey bee visitation rate	flower abundance	0.025	0.850
	pollinator richness	flower richness	0.589	0.001
	pollinator richness	temperature	0.588	0.179
	pollinator richness	flower abundance	0.098	0.181
	pollinator richness	honey bee visitation rate	0.116	0.212
Wild pollinator composition				
	honey bee visitation rate	flower composition	0.150	0.022
	honey bee visitation rate	temperature	0.330	0.007
	wild pollinator composition	flower composition, controlling for honey bee visitation rate	0.170	0.002
	wild pollinator composition	temperature, controlling for honey bee visitation rate	0.170	0.012
	wild pollinator composition	honey bee visitation rate, controlling for temperature	-0.090	0.880