

Ecography

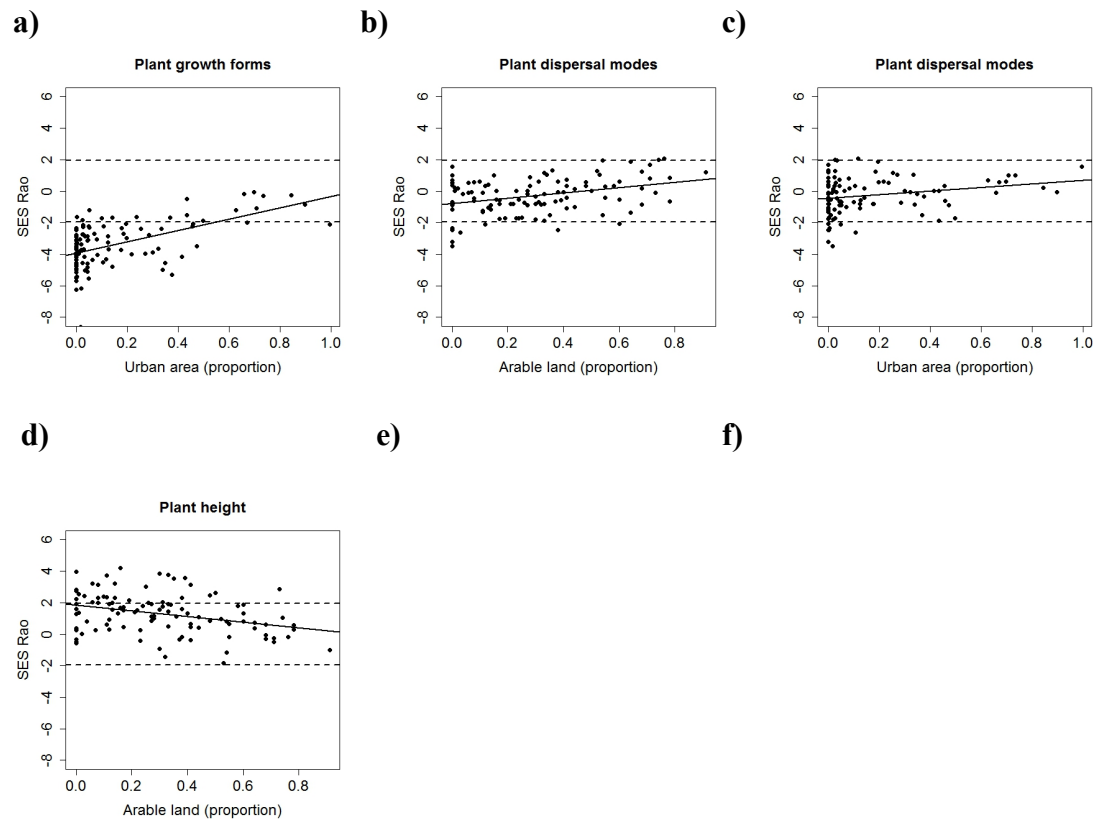
**ECOG-02121**

Concepción, E. D., Götzenberger, L., Nobis, M. P., de Bello, F., Obrist, M. K. and Moretti, M. 2016. Contrasting trait assembly patterns in plant and bird communities along environmental and human-induced land-use gradients. – *Ecography* doi: 10.1111/ecog.02121

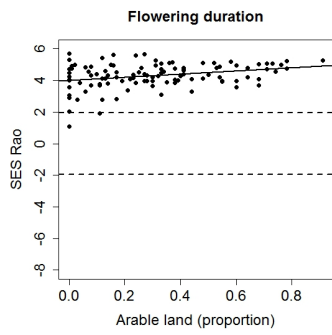
**Supplementary material**



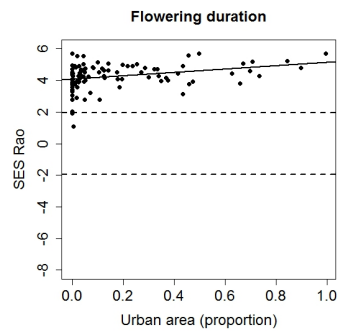
**Appendix 2.** Scatterplots of significant relationships between proportions of arable land and urban area, and  $SES_{Rao}$  of distinct traits of plants (i.e., growth forms [a], dispersal modes [b,c], plant height [d,e], leaf dry matter content, LDMC [f], and flowering duration [g,h]) and birds (i.e., wing load [i], diet [j,k] and nesting substrates [l,m]), found in GLMs testing the responses of plant and bird functional diversity patterns along distinct environmental gradients (see Table 3). Dashed lines represent the upper and lower confidence bounds of a standard normal distribution (95% probability: 1.96 and -1.96), with  $SES_{Rao}$  values between these bounds indicating random trait distributions, while values below the lower bound indicate trait convergence, and values above the upper bound indicate trait divergence



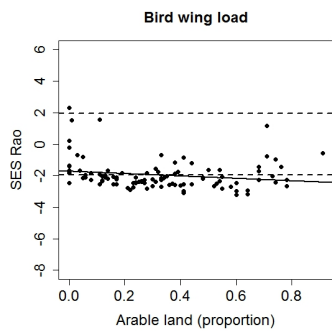
**g)**



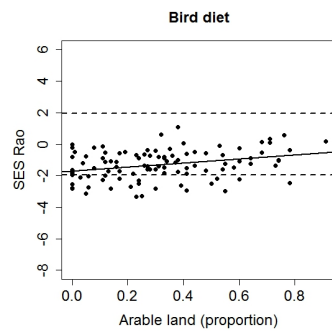
**h)**



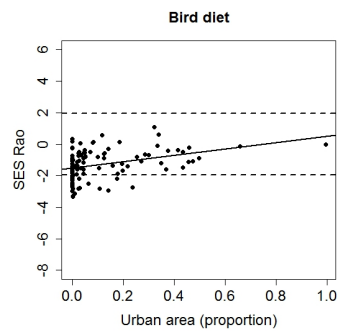
**i)**



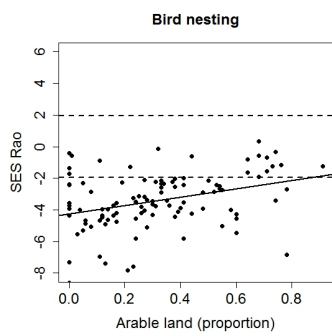
**j)**



**k)**



**l)**



**m)**

