

Ecography

**ECOG-00564**

de Oliveira, G., Fernando Rangel, T., Lima-Ribeiro, M. S., Terribile, L. C. and Diniz-Filho, J. A. F. 2014. Evaluating, partitioning, and mapping the spatial autocorrelation component in ecological niche modeling: a new approach based on environmentally equidistant records. – *Ecography* 37: xxx–xxx.

**Supplementary material**

725 **SUPPORTING INFORMATION**

726 **Appendix 1** – Scatterplots showing the functional relationships between species

727 occurrences of FULL, ENV, and GEO-models and six environmental variables.

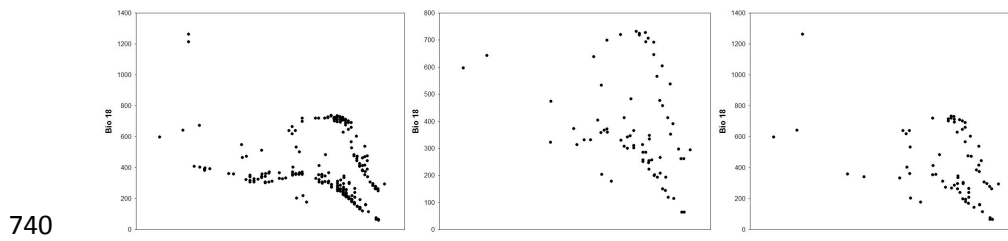
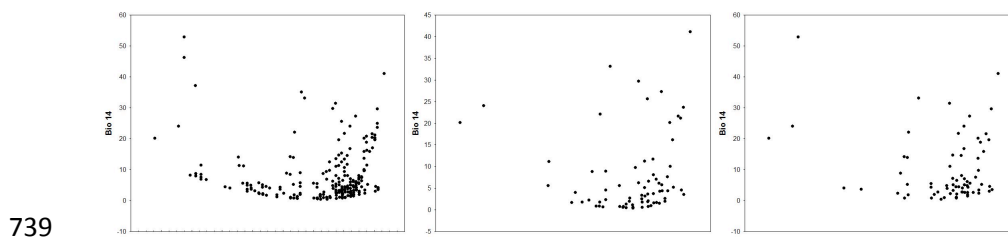
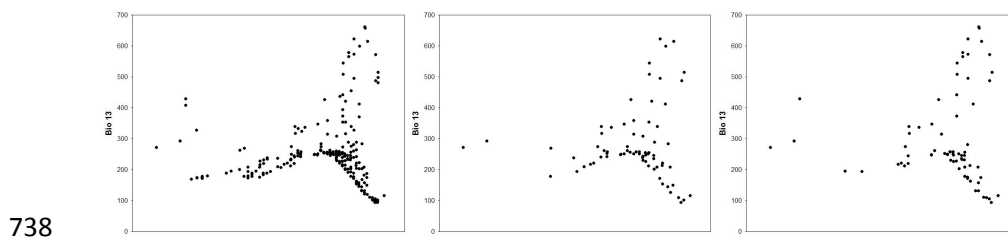
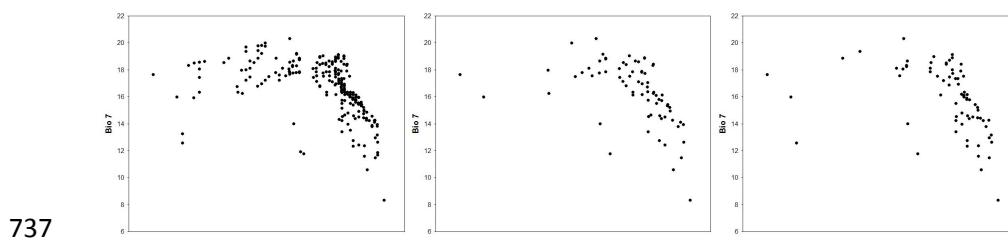
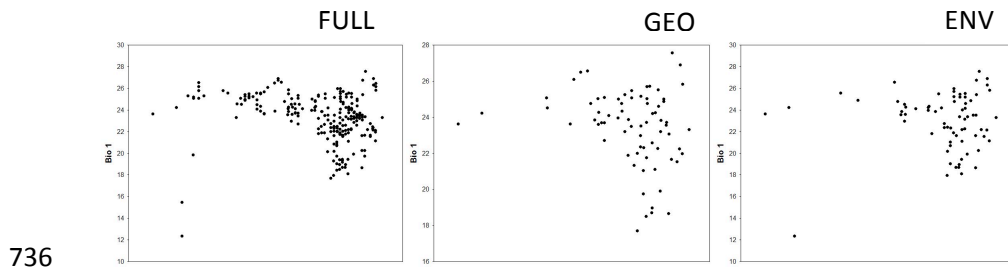
728 **Appendix 2** – Means of statistics methods (TSS, AUC, and *I*) of each ENM separated

729 by FULL, ENV, and GEO presence/pseudo-absence records.

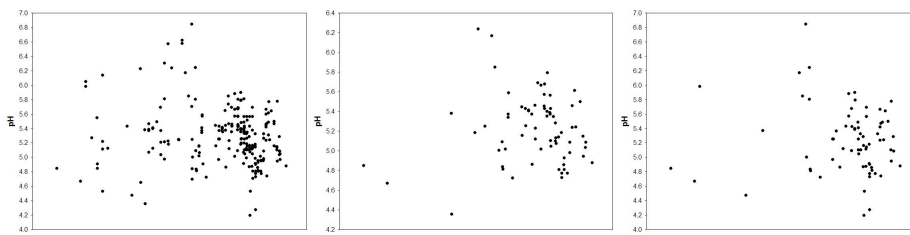
730 **Appendix 3** - ANOVA results, using as response accuracy-statistics values and as

731 predictors the sort of correction of spatial autocorrelation (FULL, GEO, and ENV).

732

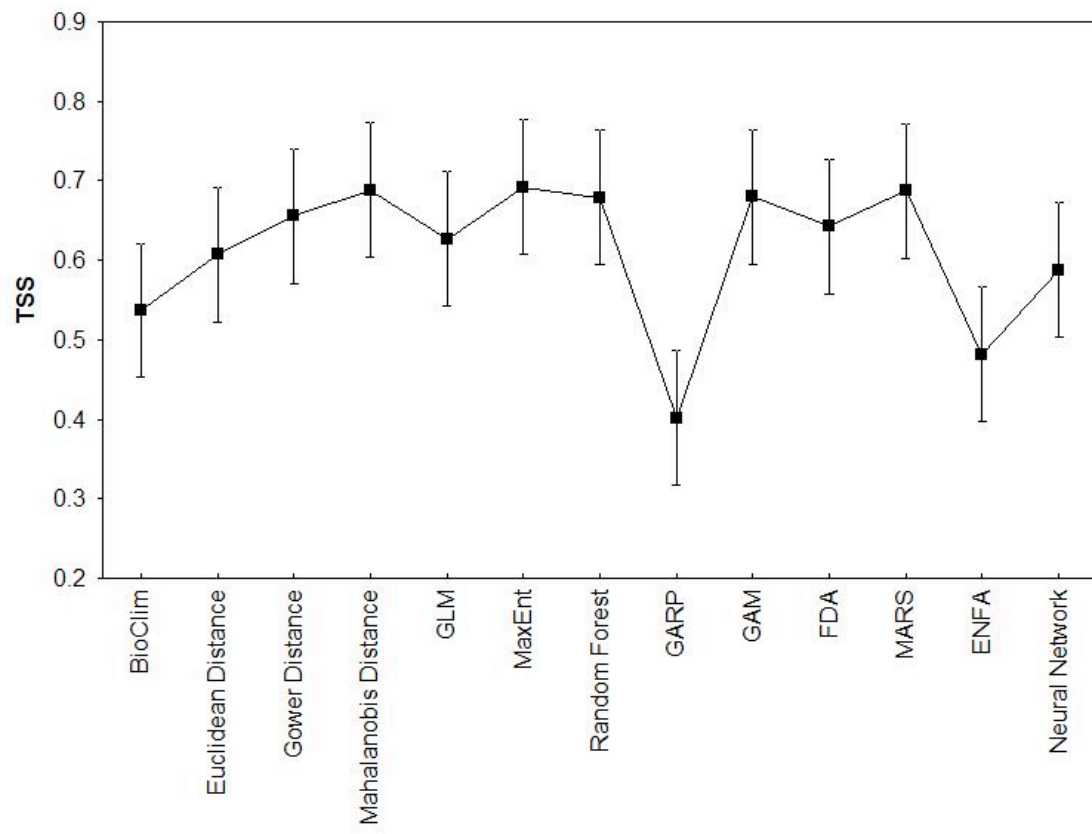
733 **Appendix 1**734 **Relationship between species' occurrences points of FULL, GEO, and ENV models**735 **and six environmental variables used to build ENMs.**

741

742 **Appendix 2**

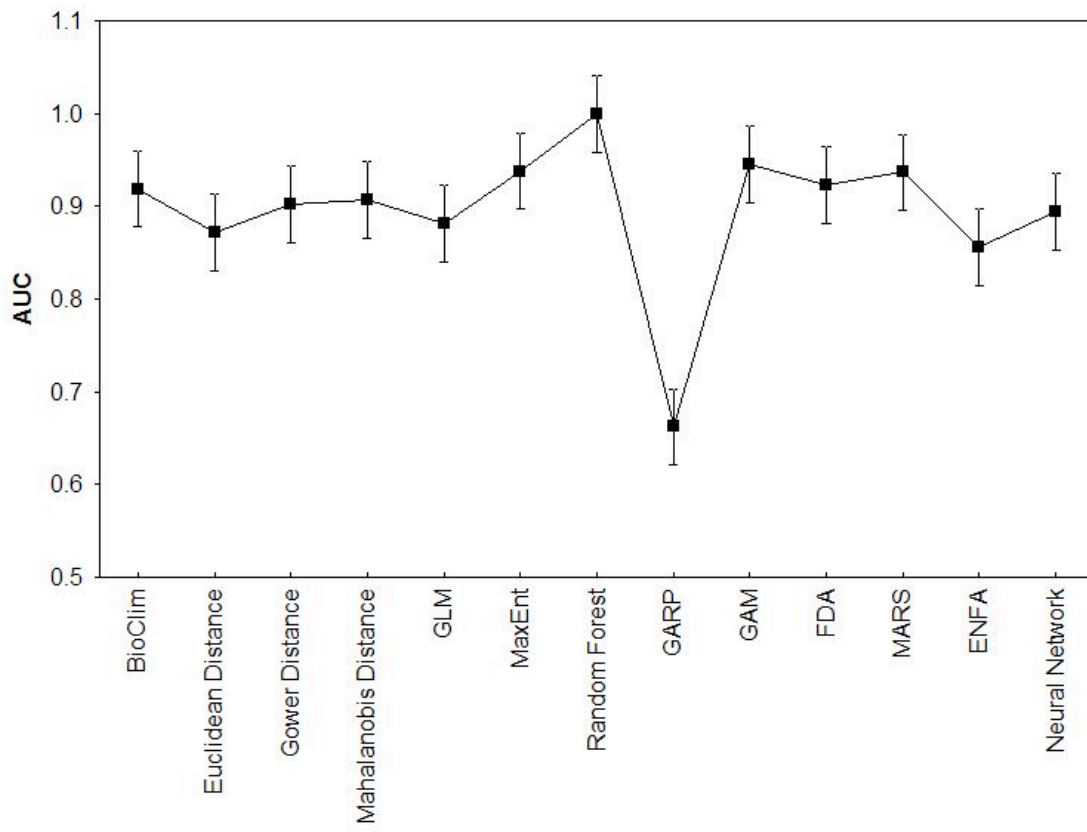
743

744 **Mean values for (a) true skill statistics (TSS), (b) area under the receiver operating**  
745 **characteristic curve (AUC), and (c) similarity statistics (I), using the three types of**  
746 **species data: first, all 238 cells retrieved as presences and selecting 238 random**  
747 **cells as pseudo-absences across the entire Neotropics (FULL), and using 72**  
748 **environmentally (ENV) and geographically (GEO) equidistant cells from those 238**  
749 **occurrence records, as presences, and selecting other 72 environmentally and**  
750 **geographically equidistant cells, respectively, across entire Neotropics, as pseudo-**  
751 **absences, separated by the 13 ecological niche models methods (see main text).**  
752 **Bars indicate confidence interval at 0.95 level.**

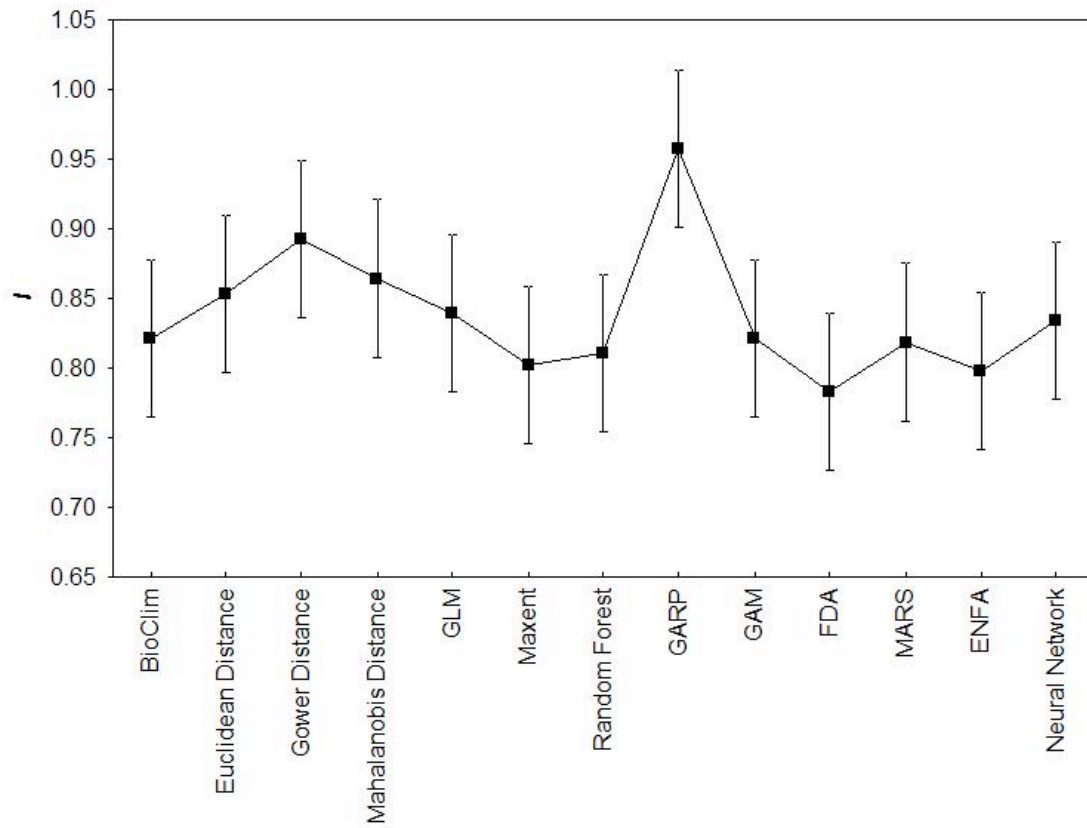


753

754 (a)



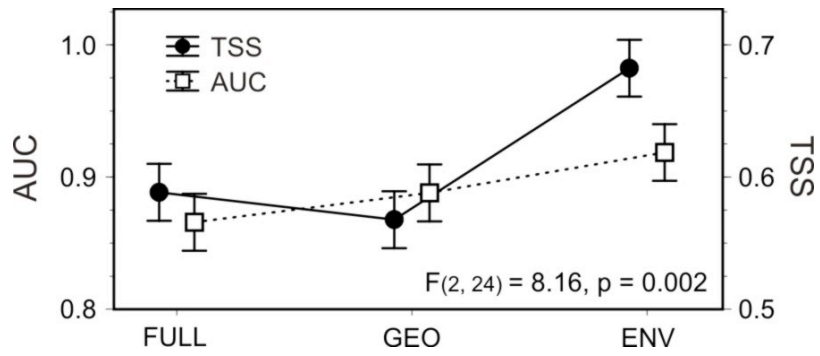
755 (b)  
756



757 (c)  
758

759 **Appendix 3**

760 **ANOVA results, using as response accuracy-statistics values and as predictors the**  
761 **sort of correction of spatial autocorrelation (FULL, GEO, and ENV). Mean values**  
762 **for both accuracy statistics (AUC and TSS) separated by FULL, GEO, and Env-**  
763 **models are shown.**



764