

Ecography

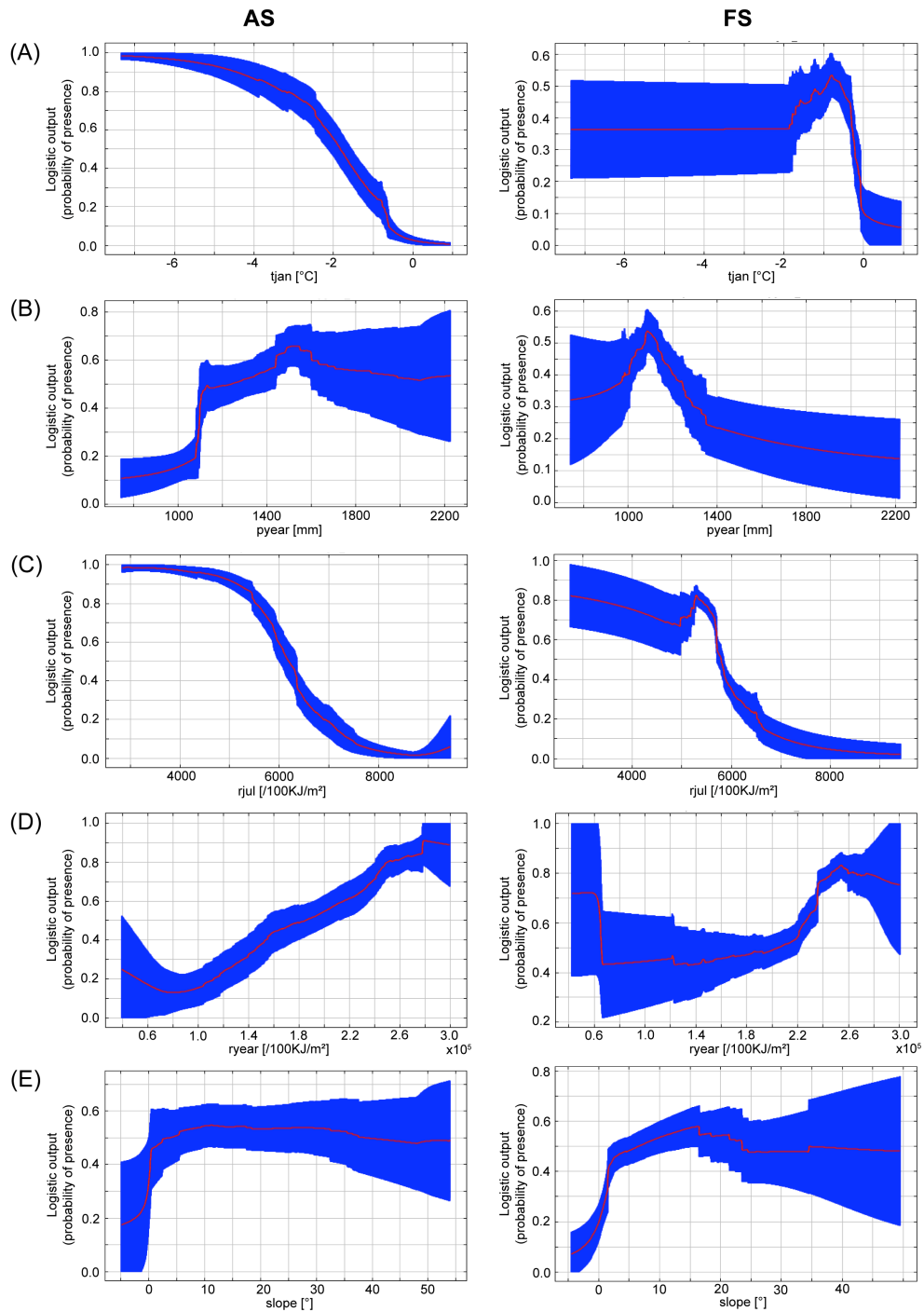
**ECOG-00242**

Werner, P., Lötters, S., Schmidt, B. R., Engler, J. O. and Rödder, D. 2013. The role of climate for the range limits of parapatric European land salamanders. – *Ecography* 36: xxx–xxx.

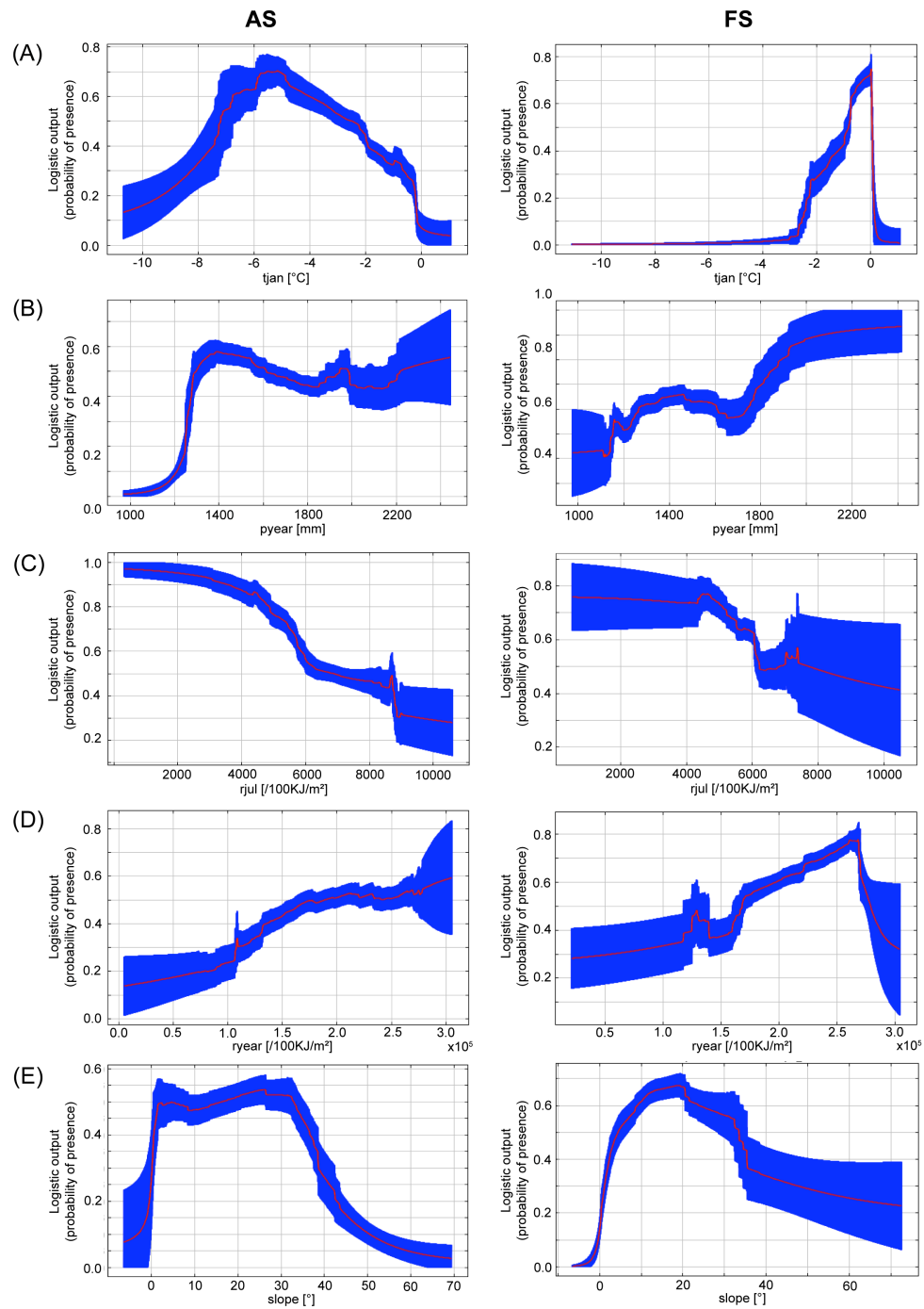
**Supplementary material**



**Appendix 2.** Response curves of the variables ‘mean temperature in January’ (A), ‘mean annual precipitation’ (B), ‘mean annual radiation’ (C), ‘mean radiation in July’ (D) and ‘slope’ (E) for SDMs of AS and FS in the western contact zone. Median scores are indicated as red line, wherein the blue area corresponds to a standard deviation of 1.



**Appendix 3.** Response curves of the variables ‘mean temperature in January’ (A), ‘mean annual precipitation’ (B), ‘mean annual radiation’ (C), ‘mean radiation in July’ (D) and ‘slope’ (E) for SDMs of AS and FS in the central contact zone. Median scores are indicated as red line, wherein the blue area corresponds to a standard deviation of 1.



**Appendix 4.** Response curves of the variables ‘mean temperature in January’ (A), ‘mean annual precipitation’ (B), ‘mean annual radiation’ (C), ‘mean radiation in July’ (D) and ‘slope’ (E) for SDMs of AS and FS in the eastern contact zone. Median scores are indicated as red line, wherein the blue area corresponds to a standard deviation of 1.

