

Ecography

E7176

Maitner, B. S., Rudgers, J. A., Dunham, A. E. and Whitney, K. D. 2011. Patterns of bird invasion are consistent with environmental filtering. – *Ecography* 34: xxx–xxx.

Supplementary material

Appendix 1: Sources for dates of species extinctions.

IUCN (2010). IUCN Red List of Threatened Species. Version 2010.1.

<<http://www.iucnredlist.org>>

Jadwiszczak P. (2009). Penguin past: The current state of knowledge. – *Pol Polar Res.* 30: 3-28.

Marples B.J. (1949). Vertebrate Palaeontology in New Zealand. – *Tuatara.* 2: 103-107.

Mayr G., Hazevoet C.J., Dantas P. & Cachão M.r. (2008). A Sternum of a Very Large Bony-Toothed Bird (Pelagornithidae) from the Miocene of Portugal. – *J Vertebr Paleontol.* 28: 762-769.

Milberg P. & Tyrberg T. (1993). Naive Birds and Noble Savages: A Review of Man-Caused Prehistoric Extinctions of Island Birds. – *Ecography.* 16: 229-250.

Scarlett R.J. (1972). Bone of a presumed odontopterygian bird from the Miocene of New Zealand. – *New Zeal J Geol Geop.* 15: 269-274.

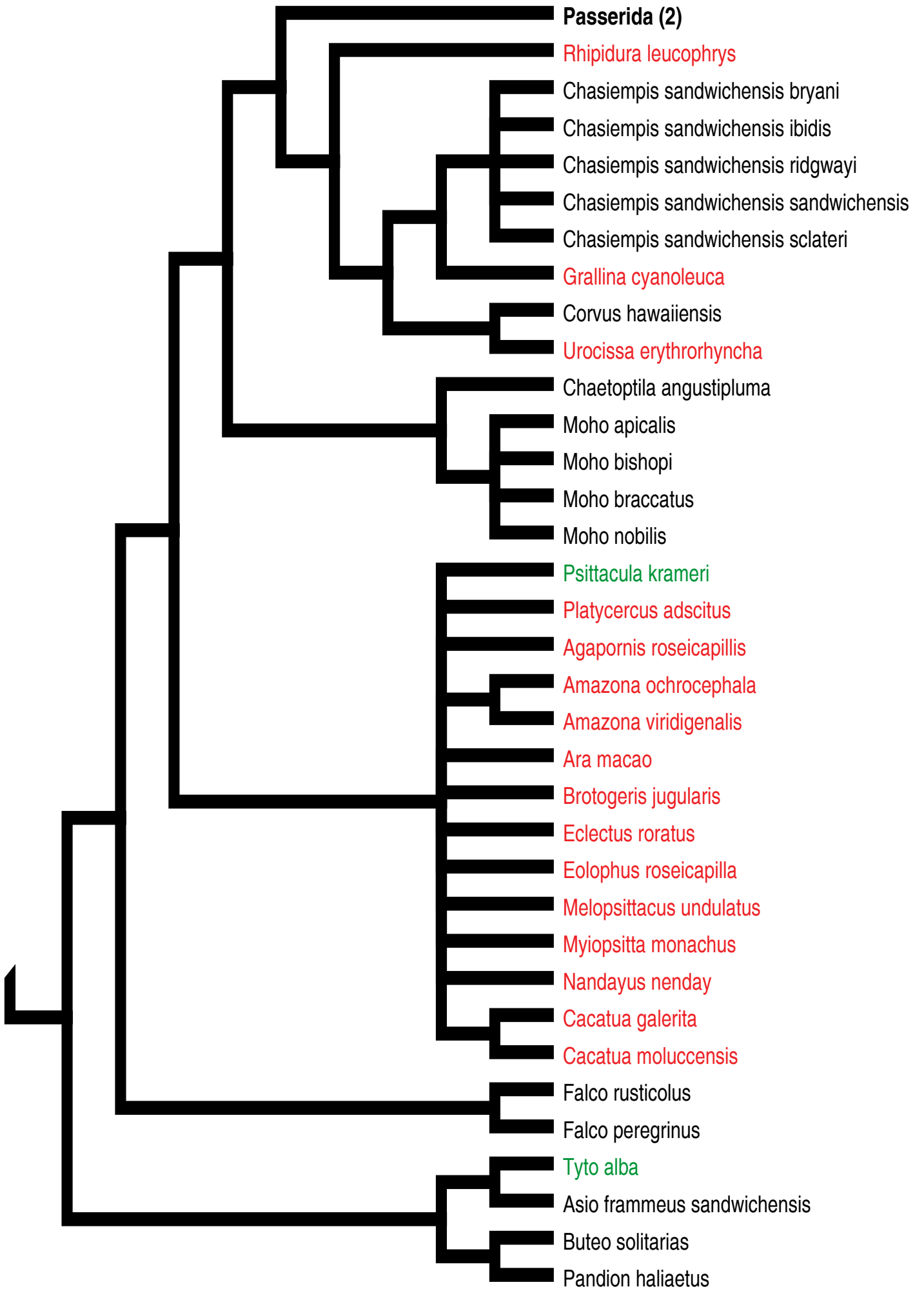
Appendix 2: Regional phylogenies

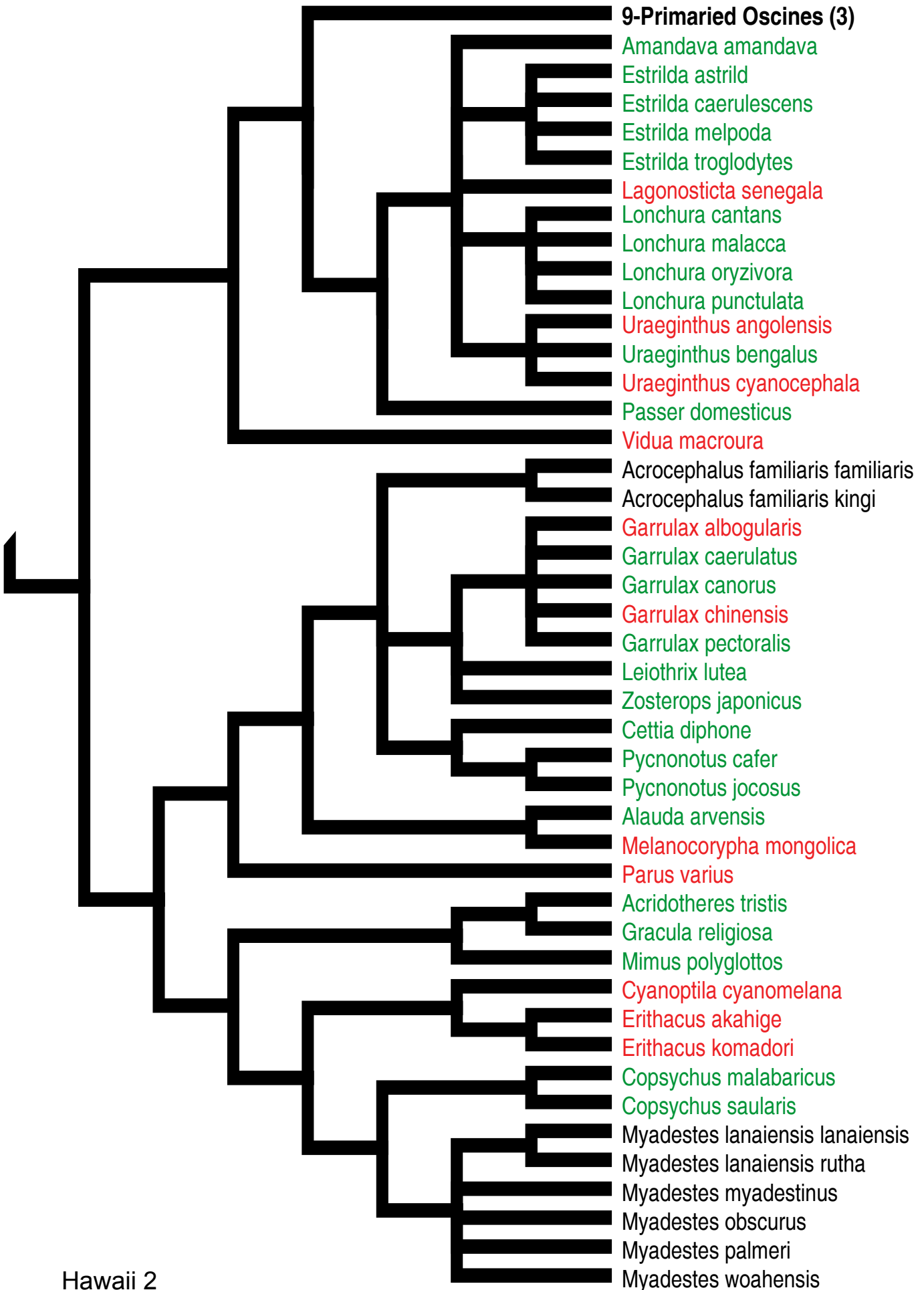
Phylogenies representing the taxa (native and introduced) within the three regions included in our study. Sub-trees are indicated in bold font followed by the page number (in parentheses) on which the expanded sub-tree can be found. Species names listed in **black** are native, those in **red** are exotics that have been introduced but have failed to establish, and those in **green** are exotics that have been become established.

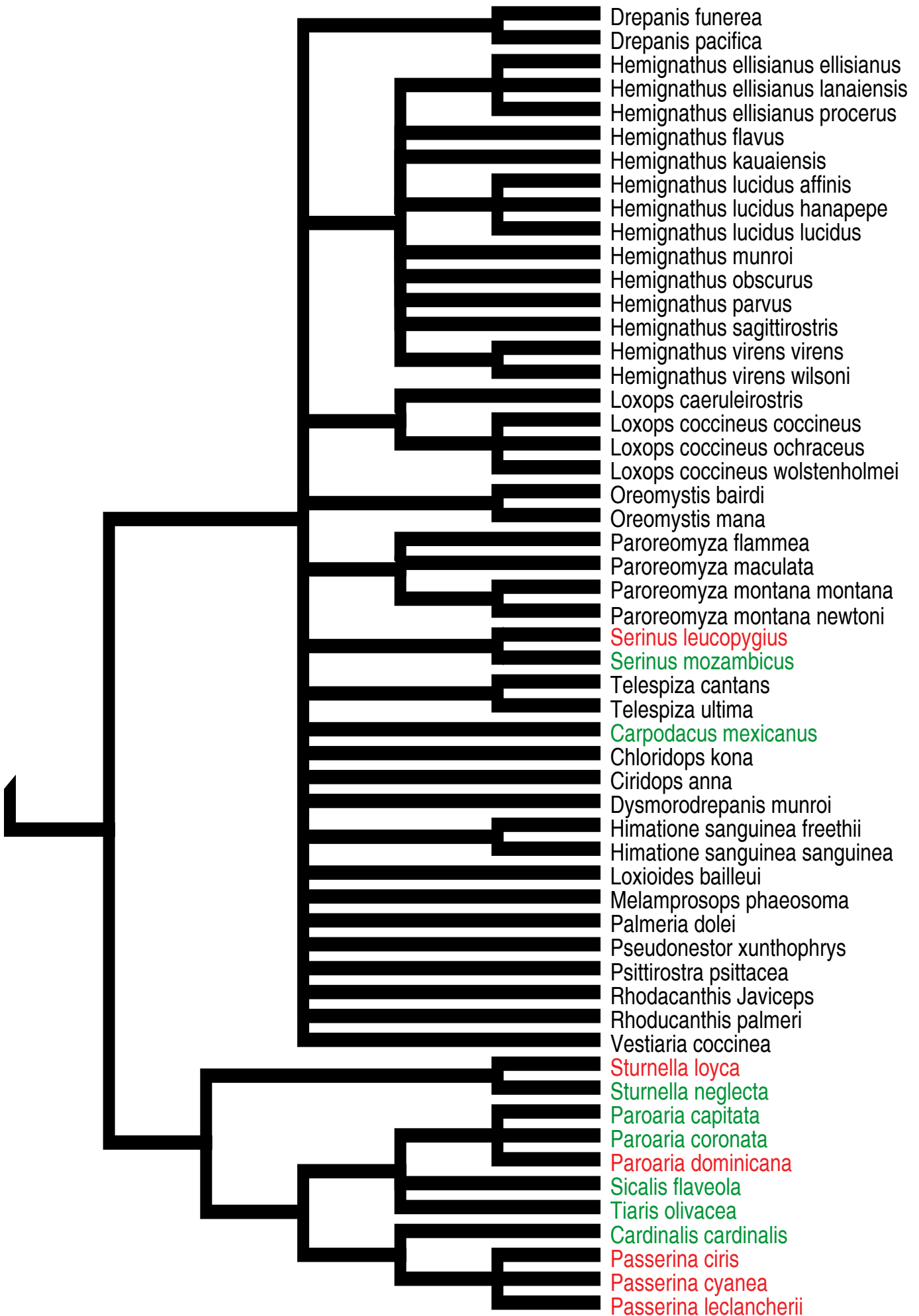
Hawaii Master Tree

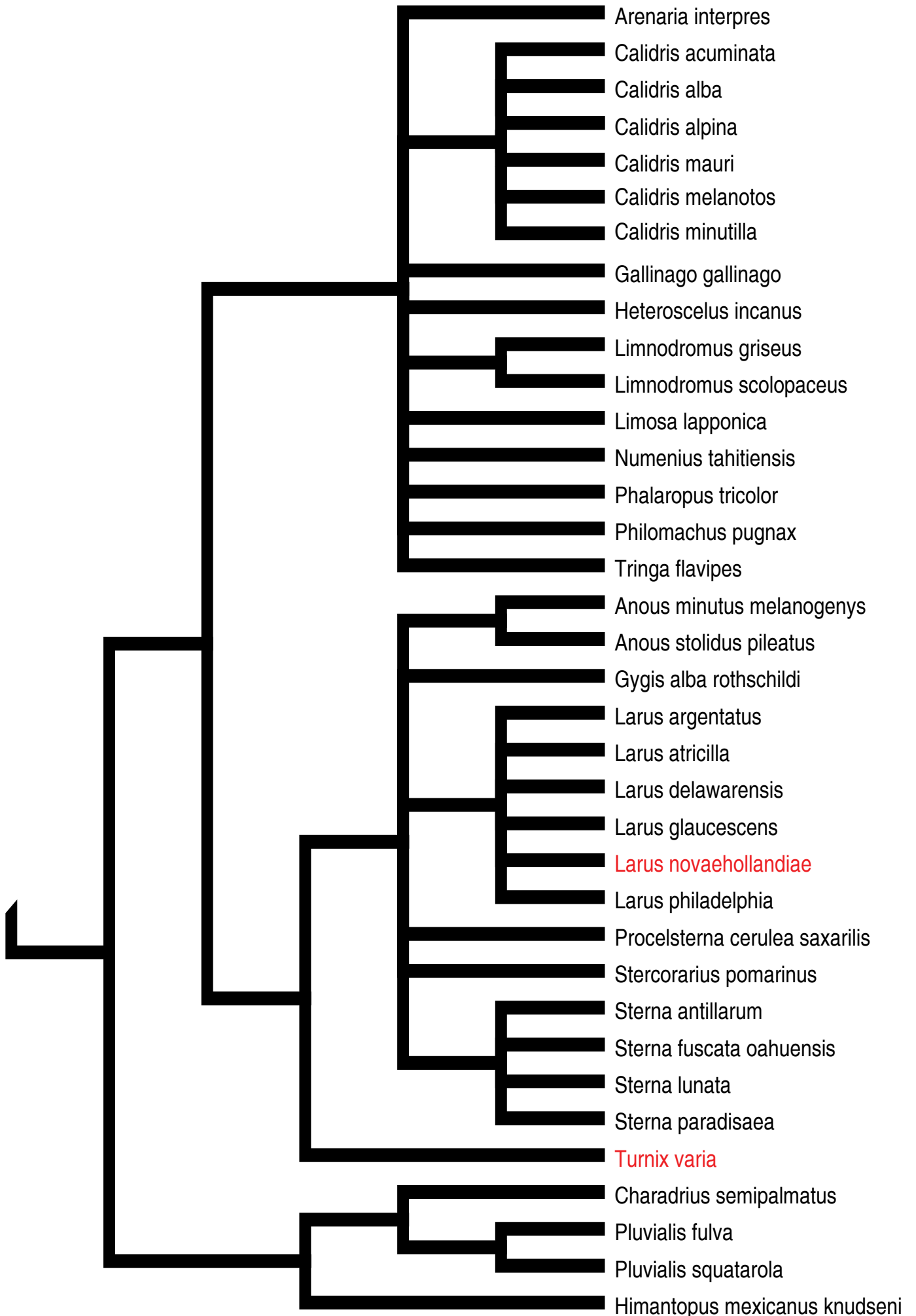


Hawaii











New Zealand Master Tree

'Land Birds' + Charadriiformes (1)

'Water Birds' (4)

Grus rubicundus

Fulica atra

Gallinula tenebrosa

Gallinula ventralis

Gallirallus australis

Porphyrio mantelli

Porphyrio porphyrio

Porzana pusilla

Porzana tabuensis

Rallus modestus

Rallus pectoralis

Rallus philippensis

Cuculus pallidus

Cuculus saturatus

Cacomantis flabelliformis

Chrysococcyx lucidus

Eudynamys orientalis

Eudynamys taitensis

Scythrops novaehollandiae

Apus pacificus

Hirundapus caudacutus

Columba livia

Hemiphaga novaeseelandiae

Leucosarcia melanoleuca

Ocyphaps lophotes

Oena capensis

Phaps chalcoptera

Streptopelia bitorquata

Streptopelia chinensis

Streptopelia decaocto

Streptopelia roseogrisea

Pterocles alchata

Phaethon lepturus

Phaethon rubricauda

Podiceps cristatus

Poliocephalus poliocephalus

Poliocephalus rufopectus

Tachybaptus novaehollandiae

Galloanserae (6)

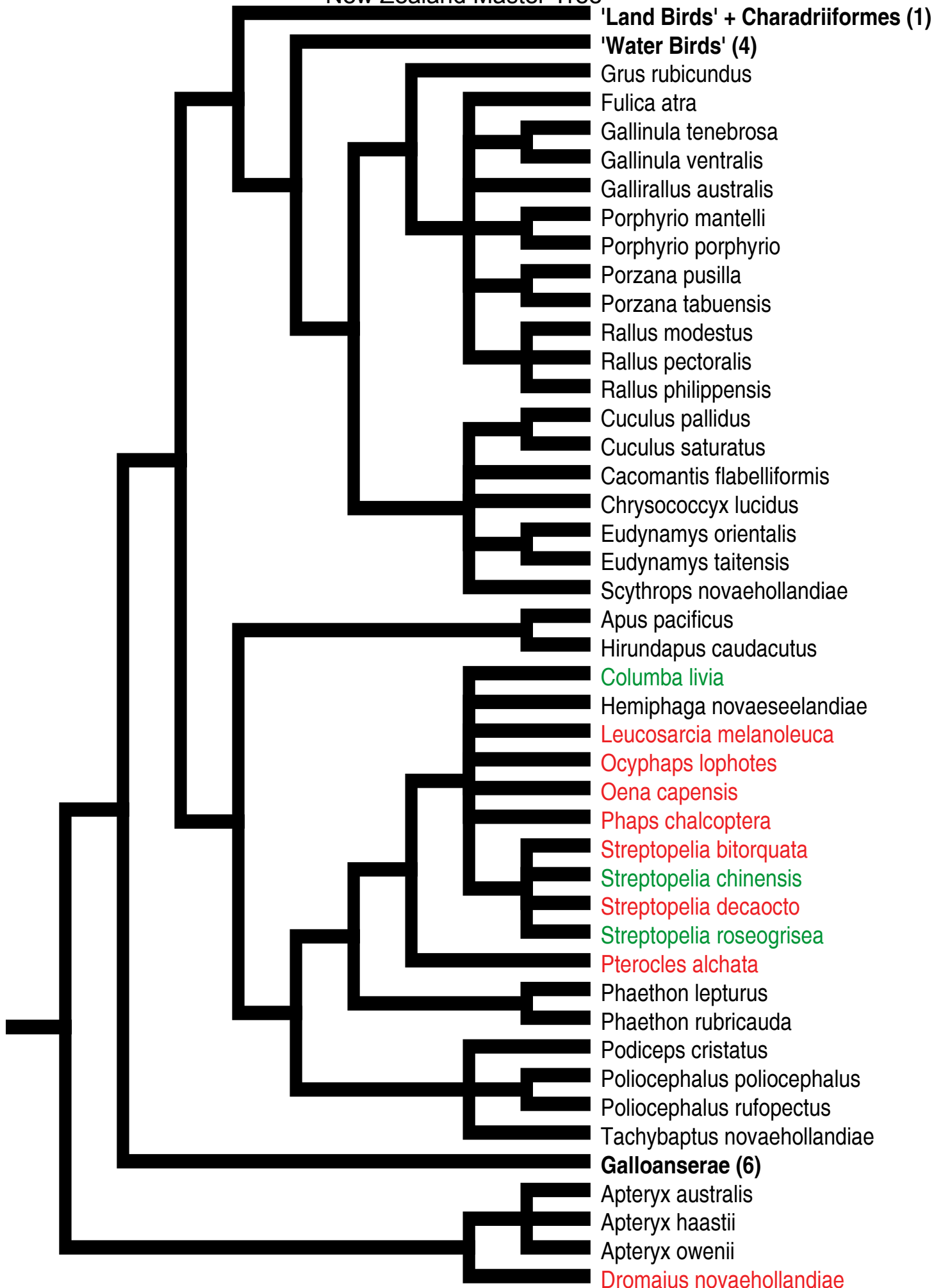
Apteryx australis

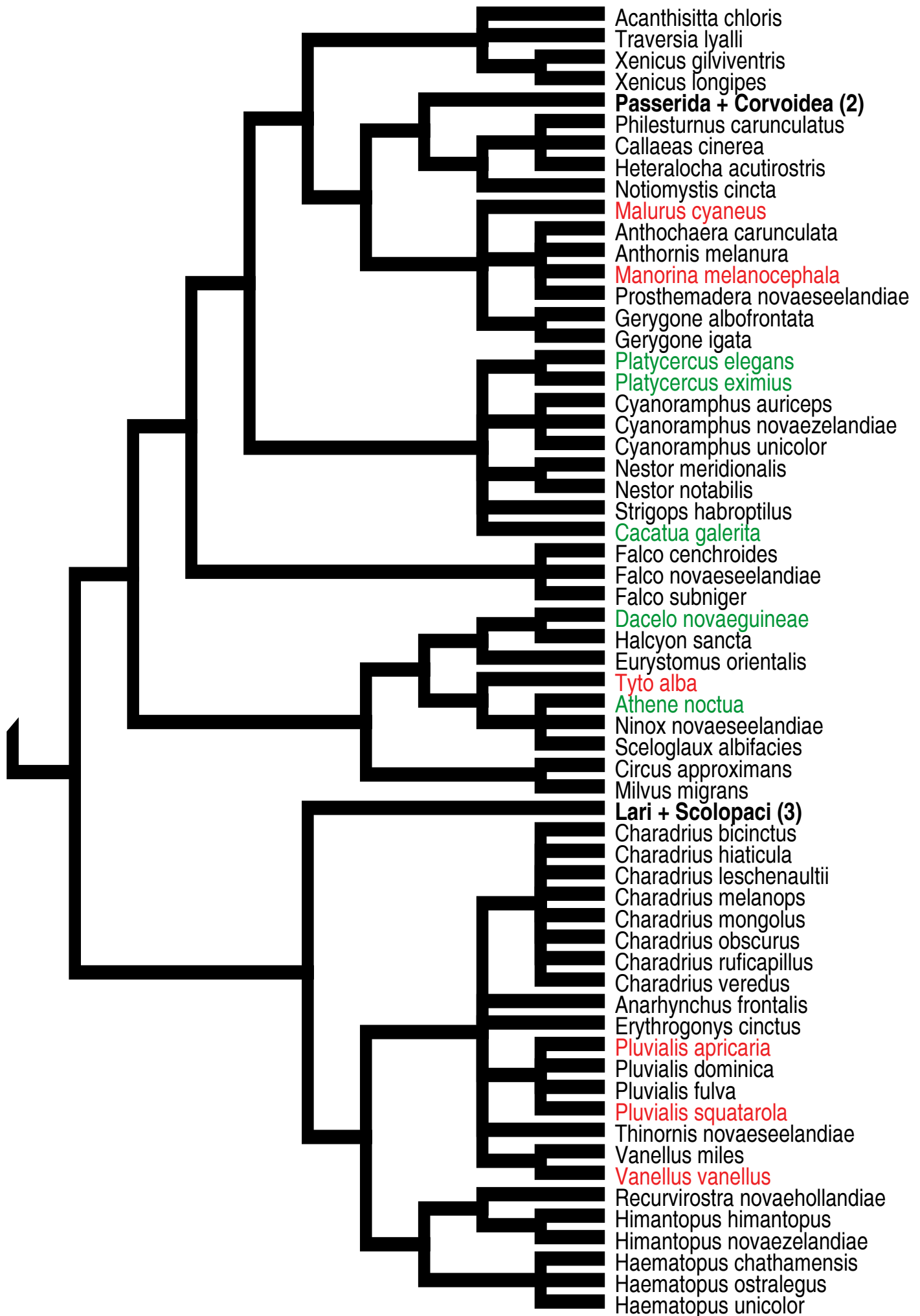
Apteryx haastii

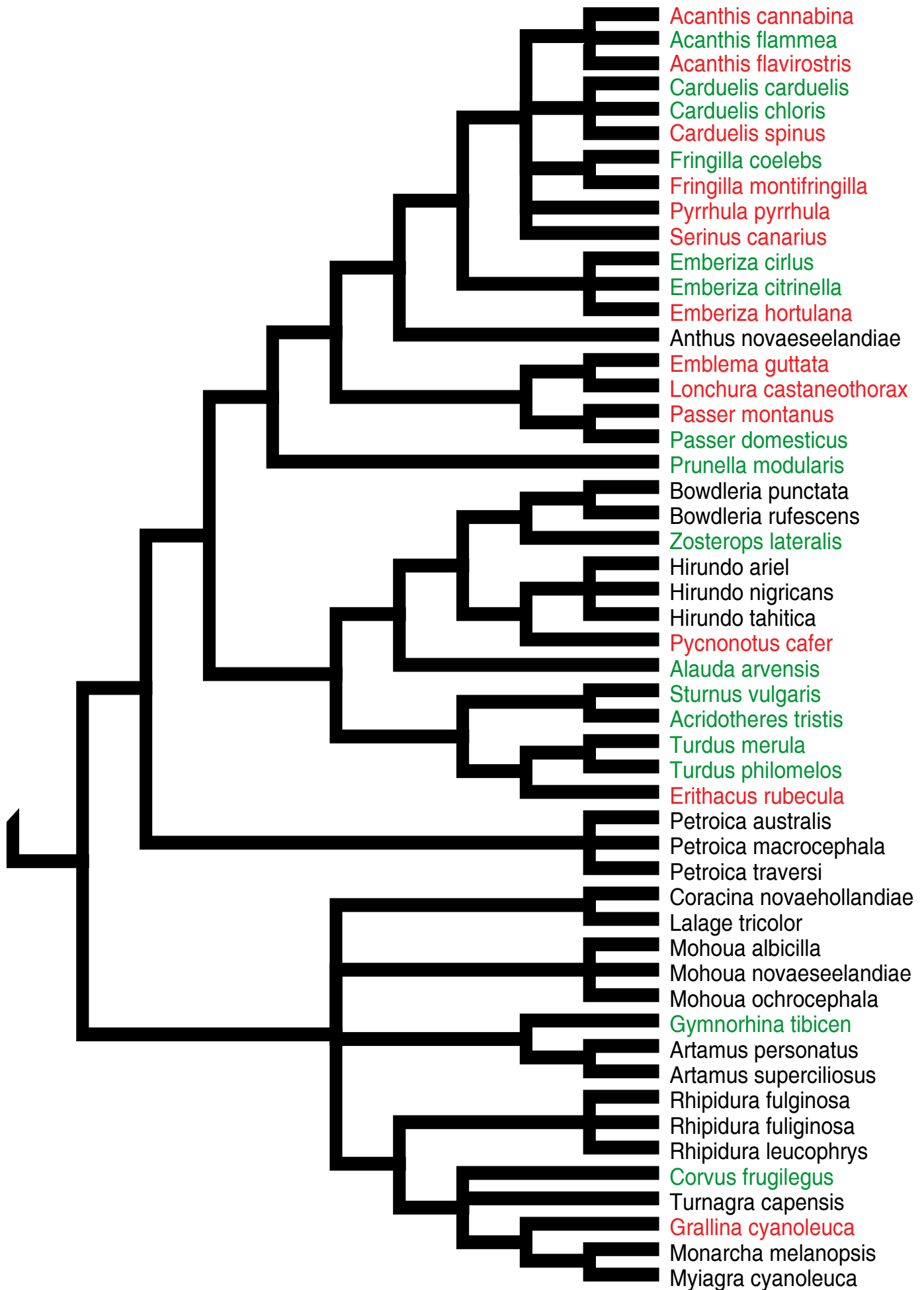
Apteryx owenii

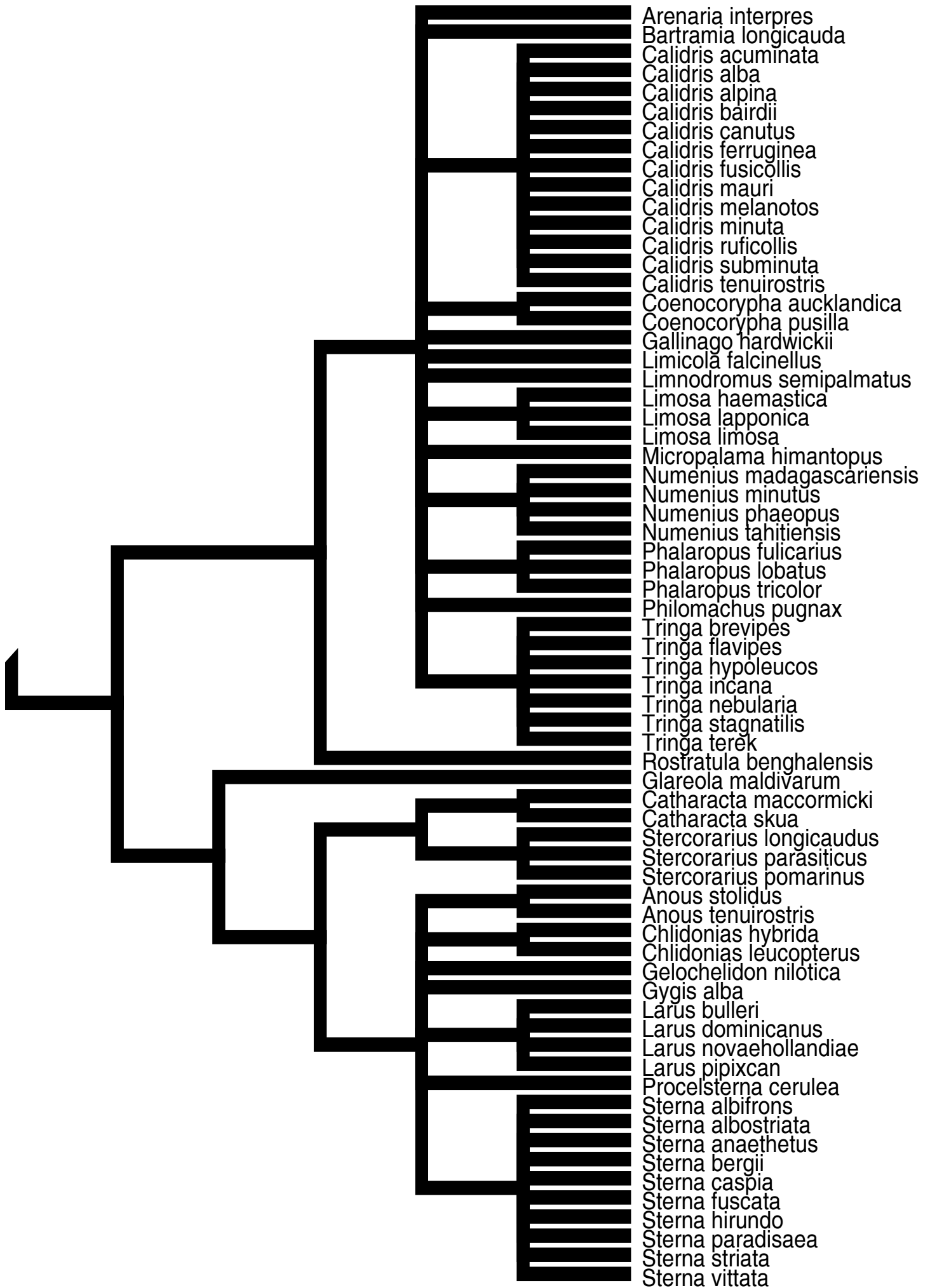
Dromaius novaehollandiae

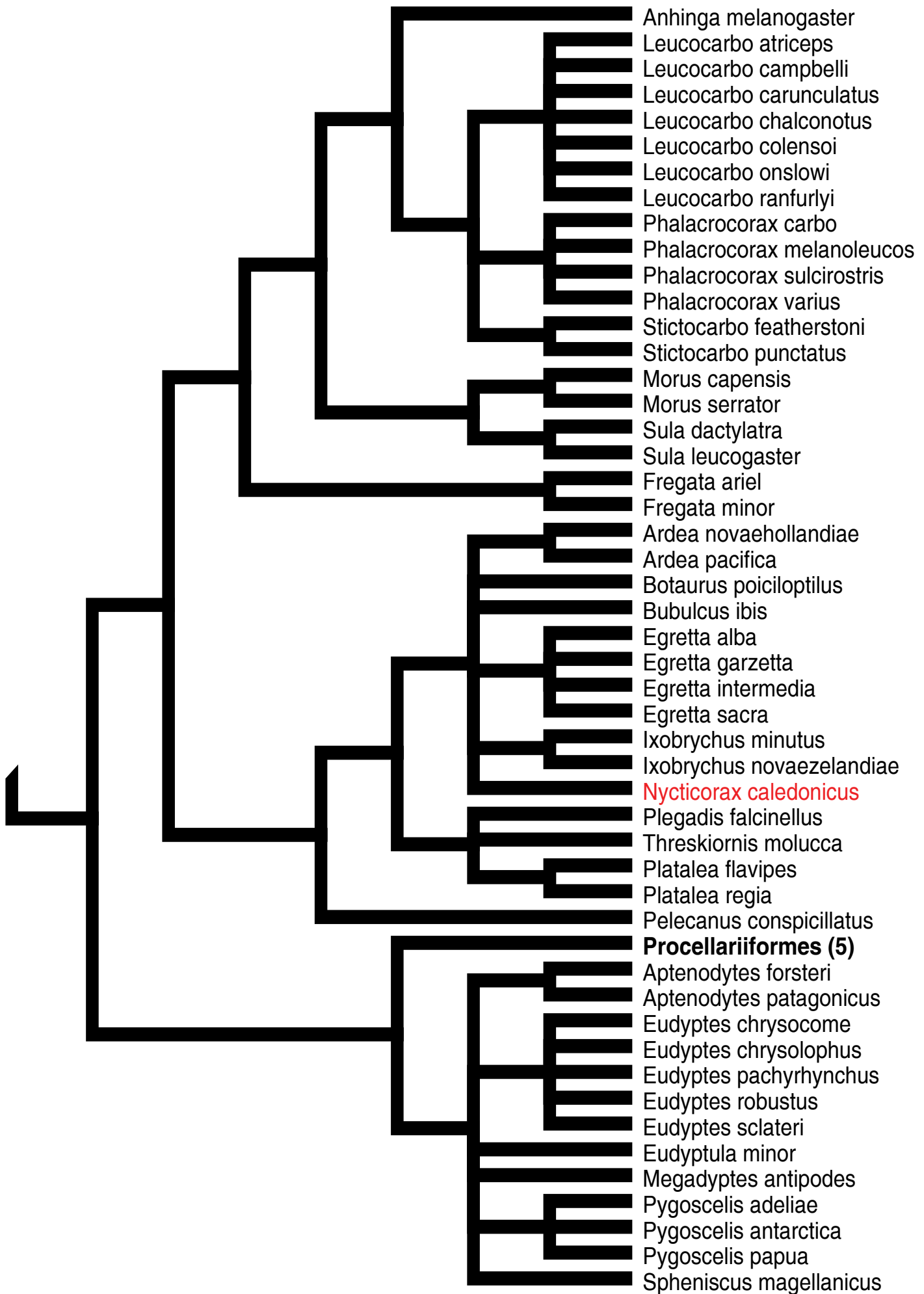
New Zealand

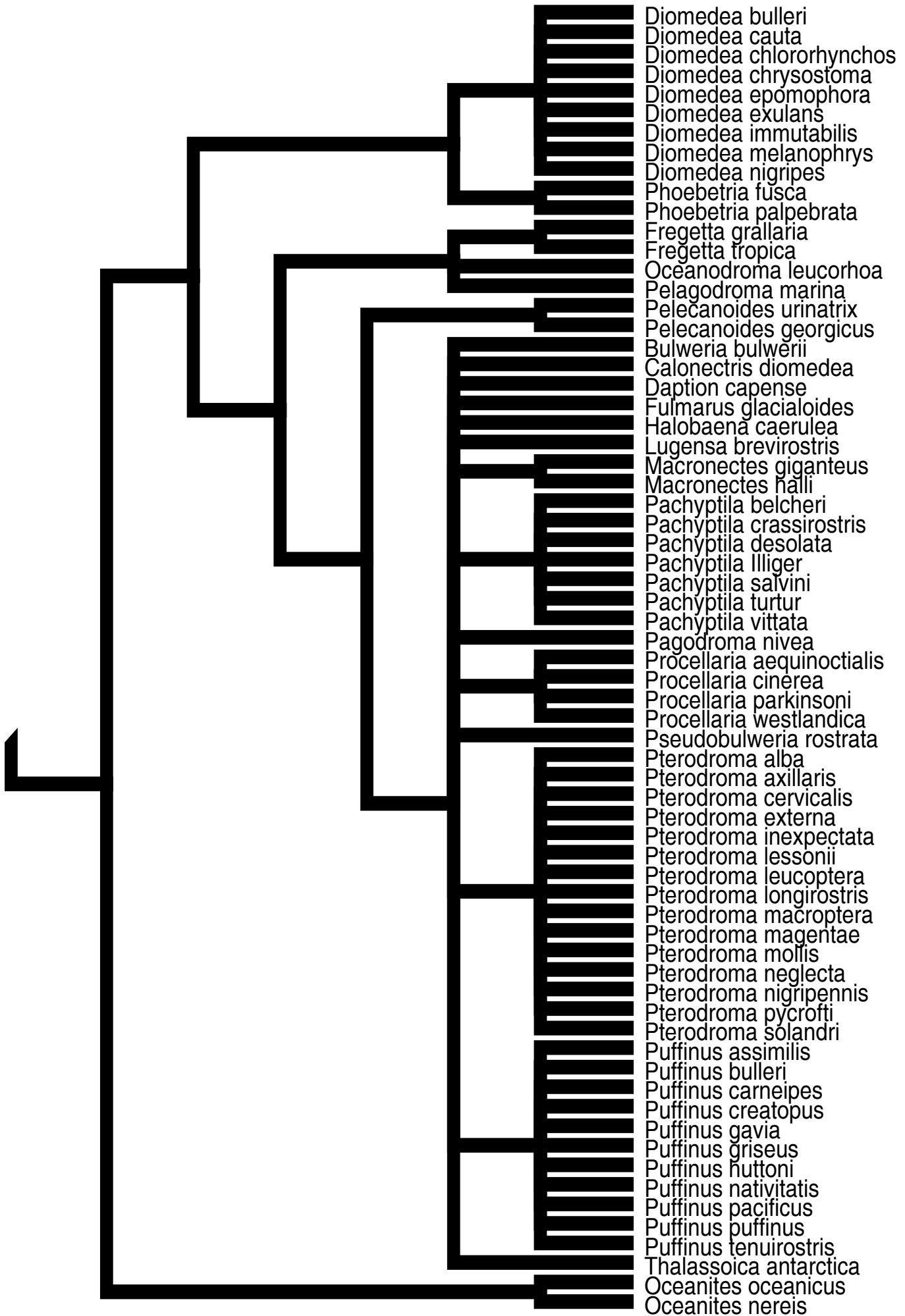


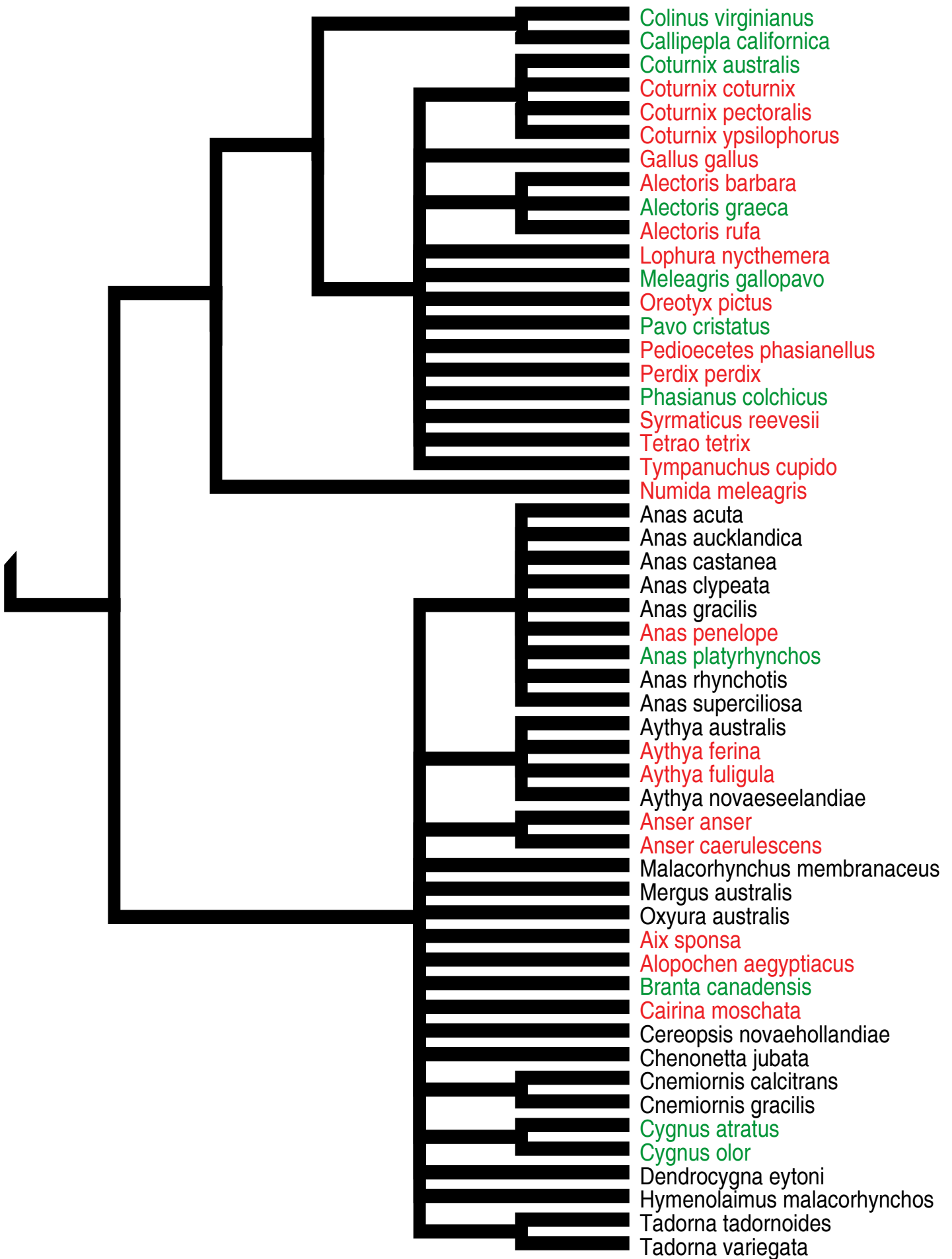




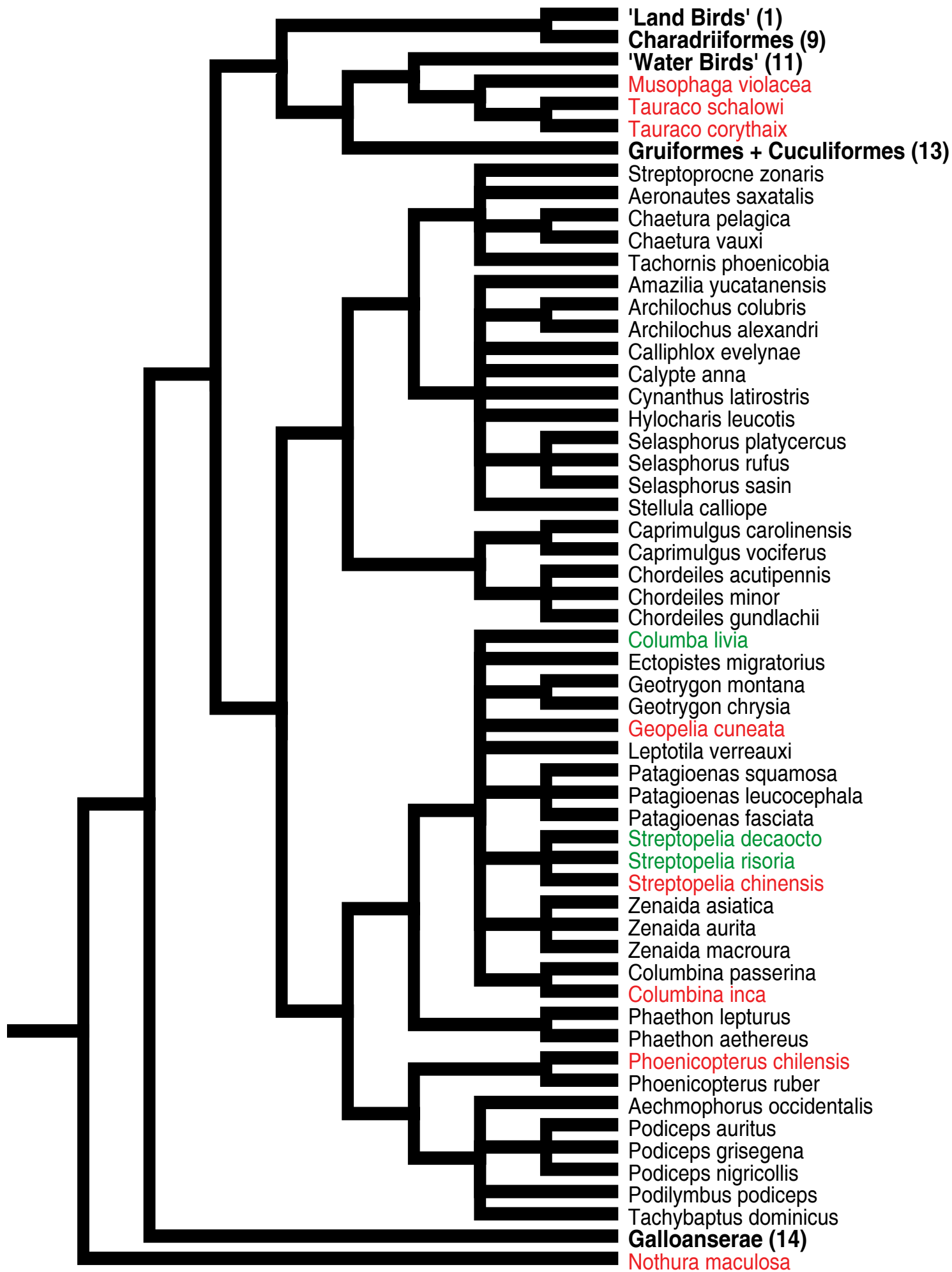








Florida Master Tree



Florida

