

Supplementary material

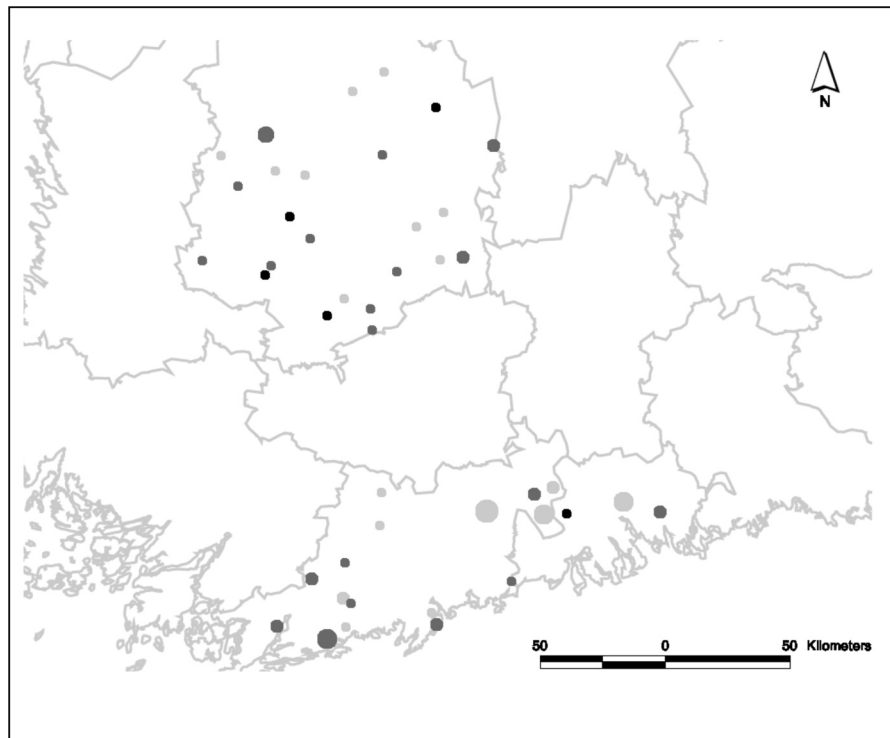


Figure S1. Spatial distribution of the selected management actions in the regional case study (northern cluster is Pirkanmaa, southern cluster is Uusimaa). Optimization over all species and all sites, assuming that representation under suboptimal management has zero value. Circle size is related to habitat patch area, with 5 area classes. Circle color indicates management intensity: black = annual grazing, light grey = biennial grazing, dark gray = no grazing.

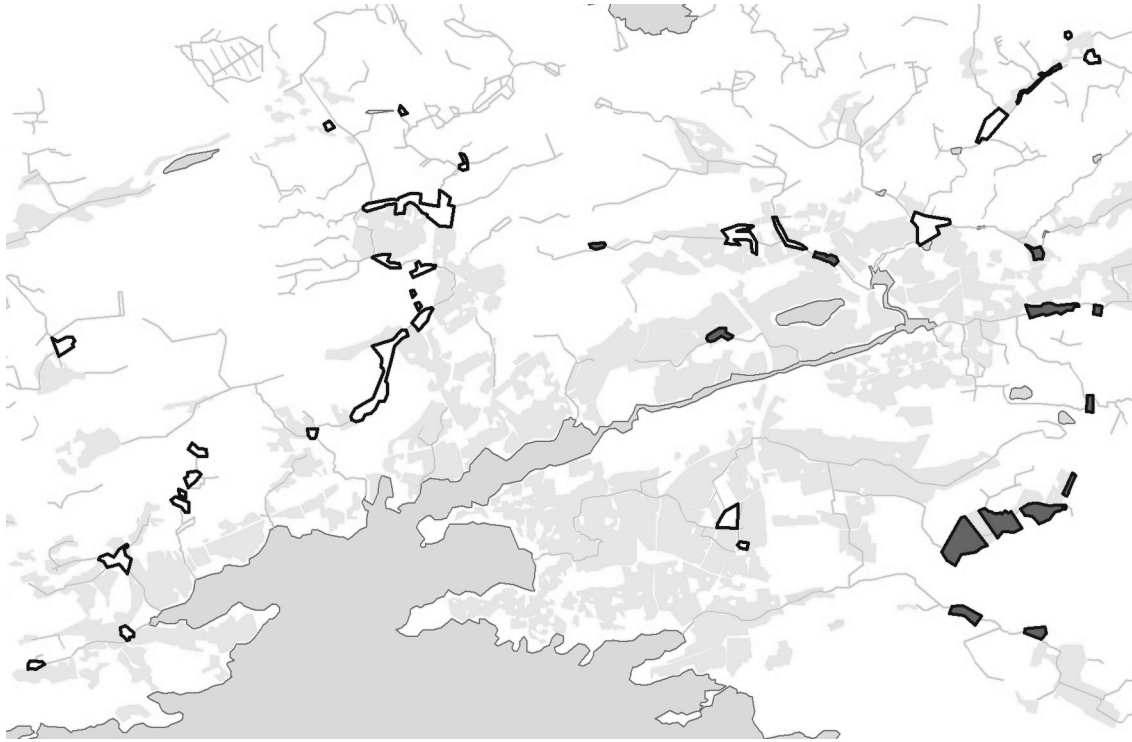


Figure S2. Example of the optimal set of sites to be managed for the landscape scale case study. This set corresponds to the threshold value of 13 meadows (Fig. 4), for which the metapopulation is expected to persist 50 yr or more.